



# Contents

<b>Introduction</b>	About Instatel	3
	What We Do	5
	A History of Industry Firsts from Instatel	5
	Our Applications	6
	Our Products	7
<hr/>		
<b>Micromate Plus™</b>	System Overview	10
	Micromate Plus Monitoring Unit	11
	Geophones and Microphones	13
	Cables	14
	Accessories and Upgrades	16
	Replacement Parts	17
<hr/>		
<b>Micromate®</b>	System Overview	19
	Micromate Monitoring Unit	20
	Geophones and Microphones	22
	Accessories	24
	Upgrades and Power	25
	Cables	27
<hr/>		
<b>Minimate Pro4™ / Minimate Pro6™</b>	System Overview	29
	Minimate Pro Monitoring Unit	30
	Geophones and Microphones	32
	Accessories	35
	Upgrades and Power	37
	Cables	38
	Replacement Parts	40
<hr/>		
<b>Software</b>	Vision II™	42
	Live Data™	45
	Vision II™ Feature List	46
	THOR™	48
	THOR Advanced™	51
<hr/>		
<b>Supplementary</b>	Specifications	54
	Dealer Representatives & Calibration Centers	58
	Our Services	59

# About InstanTEL

For over 40 years, InstanTEL has been a global leader with best-in-class vibration, noise and air overpressure equipment for quarries, mining, construction, civil, geotechnical and other applications. Our products have contributed to the success of our customers' projects in over 85 countries and on countless sites. From specialized sensors and recording options, to remote data collection and a cloud-based data hosting solution, InstanTEL provides solutions that work.

We are proud of our position as an industry leader, boasting many industry firsts, but it does not stop there. We are committed to continuous improvement through innovation. We understand that our customers face challenging environments daily and need reliable data fast to ensure the success of their projects. We specialize in providing the tools that complete each project safely, quickly, and within compliance.

Our flexible product portfolio allows our customers to select the monitoring solution that best meets their needs - whether deep in the earth, above ground, or underwater.

Welcome to InstanTEL.



## The World's Most Trusted

Vibration ▪ Noise ▪ Air Overpressure ▪ Remote Monitoring ▪ Cloud-Based Data Management ▪ Calibration ▪ Repairs ▪ Software Solutions



# What We Do

We design, manufacture, calibrate and service all our products. For our software systems, we take care of all the backend support and development. We thrive on creating industry firsts, and at InstanTEL we've created a lot of them.

Our dedicated Product Development team strives to keep us at the forefront of innovation, while working with our customers to improve our current product lines. We design software solutions that fully integrate with our units, making data collection smooth and effortless. For us, ease-of-use is a way of thinking, designed into each and every InstanTEL product.

At InstanTEL, we don't just deliver industry-leading products, we also deliver world-class service. Our knowledgeable Technical Support team is dedicated to providing our customers with practical expertise and advice. Our customers often face difficult installations and we are here to help them find the right solution.

We drive quality in every service we deliver and never take shortcuts. We calibrate at every frequency on the spectrum, not just a subset. When your units are calibrated by InstanTEL, you can guarantee that your event data is accurate. Our Service and Calibration team is committed to low turnaround times, keeping units where they are needed – in the field.

We know our industry is complex and with it comes complex requirements. That's why we are always looking at how we can improve our product offering and our service. Being an industry leader is not enough. Innovation, reliability, and quality is the cornerstone of everything we do. From accessories, to complex monitoring units, to calibrations, to customer service, you can trust InstanTEL.

## A History of Industry Milestones from InstanTEL



Compact Seismograph



Touch Screen Interface



Auto Call Home



Histogram-Combo™ Mode



Web Reporting



Compliance Reporting



In-field Printer

# Our Applications

Operation of heavy equipment and activities such as construction, blasting, pile driving, and demolitions can create vibrations, air overpressure, and/or noise that can have adverse effects on the surrounding structures and environment both above and underneath the ground. With underwater and marine activities, both marine life and the ecosystem are at risk. Monitoring these activities protects people, structures and the environment.

**Blasting**



**Underwater & Marine**



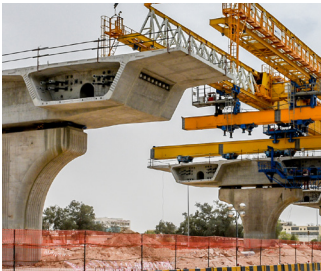
**Construction**



**Tunnels & Subways**



**Civil Projects**



**Pile Driving**



**Quarries**



**Underground Mines**



**Dynamic Compaction**



**Demolition**



**Vibration Dose Value**



**Oil and Gas Exploration**



**Remote Access**



**Research**



# Our Products

With our solid portfolio of products, you will always have the right solution for your most demanding projects. Access post-monitoring data and reporting for the Micromate series from our cloud-based Vision II platform. Monitor in near real time using Live Data. For the Minimate Pro series, access your local computer using THOR software. InstanTel offers complete hardware and software systems for all your monitoring needs!

## Monitoring Solutions

### Micromate®

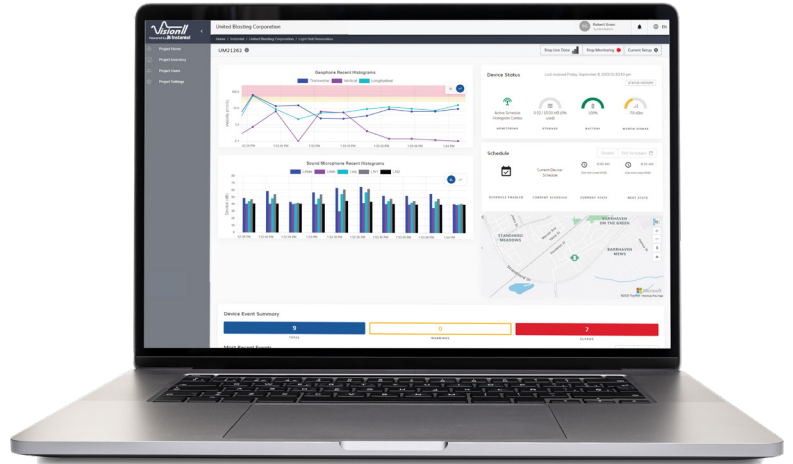


### Micromate Plus™

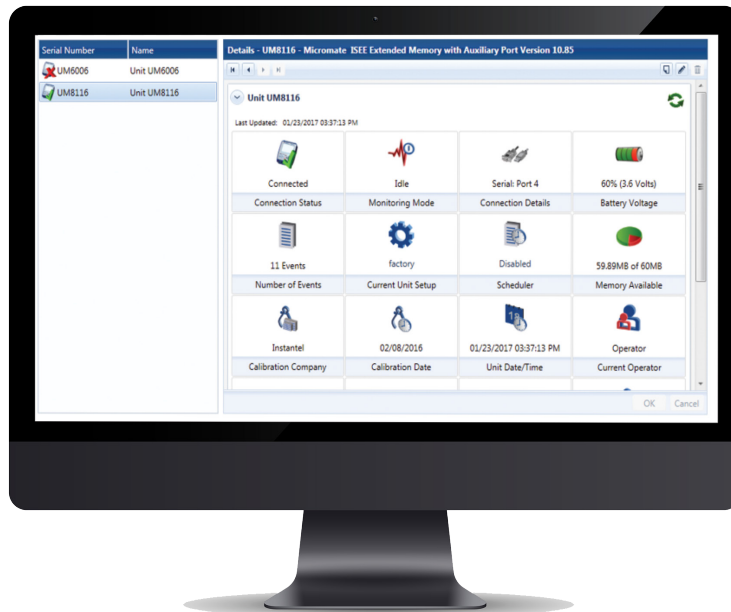


### Minimate Pro™

# Software Solutions



featuring **Live Data**™





## How a Micromate Plus Monitoring Unit Connects Using Vision // Software System

The Micromate Plus monitoring unit provides rugged, reliable monitoring with a built-in modem for wireless connectivity. Connect a geophone or microphones for sound and air overpressure all at the same time. Retrieve data from the unit itself using a portable USB-C, or uploaded via a wireless connection and Vision // cloud-based software, or by directly connecting to a PC.

# System Overview



# Micromate Plus

# Micromate Plus™

## A BETTER WAY TO MONITOR

The Micromate Plus monitoring unit offers robust, reliable monitoring with built-in connectivity options, including cellular and Wi-Fi modems, GPS, and a solar charge controller. The USB-C port provides fast charging and facilitates data transfer when a cellular network is unavailable. Solar power can be connected through the Power port, and data retrieval is seamless with Vision II software—no monthly subscription fees are required.

One of the standout features of the Micromate Plus is its interchangeable geophones, which are independent of the base unit. Only the geophones require calibration, allowing the unit to stay deployed in the field. With an extra set of pre-calibrated geophones, you can quickly swap them out to avoid downtime. Geophones can be mounted on a horizontal or vertical surface, and you can monitor them simultaneously alongside the linear and sound microphones in real-time, fully time-synchronized. The sound microphone captures both decibel levels (dB) and audio clips. For in-field configuration, the fail-safe keypad ensures functionality, even in areas with no cellular coverage.

Designed to withstand the toughest conditions, the Micromate Plus comes with color-coded Mil-Spec connectors, an IP68 rating, and a rugged aluminum casing with a protective boot that is easily removable. The robust connectors are even usable while wearing gloves. Capable of operating in extreme temperatures ranging from -40°C to 55°C (-40°F to 131°F), the unit is built for reliability in all environments. Data retrieval is flexible too—either through automatic uploads via Wi-Fi or cellular connection to the cloud-based Vision II platform or through offline options using the USB-C port for a thumb drive or a direct computer connection. Whether online or offline, there is always a way to get your data—24/7/365.

The Micromate Plus is engineered for ease of use, with an intuitive interface designed for daily operations. Quick-access function keys streamline common tasks, and seamless integration with Vision II software transforms the unit into a complete monitoring solution. You can easily switch between international compliance standards, like ISEE and DIN, and generate user-selectable custom compliance reports to meet local requirements within Vision II.



## WORKING SEAMLESSLY WITH VISION // SOFTWARE

The Micromate Plus integrates with Vision // to deliver a cloud-based monitoring solution with company, user, project, and device management. Users access real-time gauges for critical data, along with configurable warnings and alerts for rapid response. Remote synchronization and setup streamline field operations, while compliance graphs can be downloaded and printed to support reporting and regulatory requirements.



A robust and versatile monitoring device designed for reliable use across a wide range of applications.



The base unit features interchangeable geophones calibrated to meet international standards, including ISEE, DIN, and Swedish standards. For a complete list of standards, refer to the Specification Sheet 727B001.

The Micromate Plus is designed for versatility and can easily switch from one application to another. Its range of applications include blasting, mining, quarries, civil projects, and construction activities.

Description	Code
Base Unit	727A4201
Base Unit with AUX Port	727A4202
Vision //	Included
Live Data	72600801

Instruction Sheet Available Online

Tutorial videos available on YouTube.

# Geophones and Microphones

Micromate Plus geophones and microphones are fully interchangeable, allowing you to quickly replace any unit requiring calibration with a pre-calibrated one—minimizing downtime and keeping your field operations running efficiently.



## Triaxial and Uniaxial Geophone

Geophone calibrated to multiple standards, including ISEE 2 - 250 Hz, DIN 1 to 80 and DIN 1 to 315 Hz. Can be mounted on vertical or horizontal surfaces. Blue color-code connector sleeve. Includes mounting spikes (P/N: 1100241)

Description	Code
2 m (6.6 ft) Cable Length	727A0301
8 m (26.3 ft) Cable Length	727A0302

[Instruction Sheet Available Online](#)



## Sound Level Microphone

10 Hz - 20 kHz Class 1 sound/noise microphone. Calibrated to the IEC 61672-1 standard. Includes a Microphone Stand Assembly (P/N: 720A6001).

Description	Code
2 m (6.6 ft) Cable Length	727A3001

[Instruction Sheet Available Online](#)

## Triaxial Borehole Geophone

Geophone calibrated to multiple standards, including ISEE 2 - 250 Hz, DIN 1 to 80 and DIN 1 to 315 Hz. Size 64 mm (2.5 in). Note: requires a 7.6 cm (3 in) minimum diameter borehole for installation.



Description	Code
30 m (97.4 ft) Cable Length	727A4001
75 m (246.1 ft) Cable Length	727A4003

## ISEE Linear Microphone

2 - 250 Hz linear microphone. Measures air overpressure on a linear scale. Calibrated to the ISEE-2022 and Swedish Air Shock SS025210 (2 - 315 Hz) standards. Includes a Microphone Stand Assembly (P/N: 720A6001).



Description	Code
2 m (6.6 ft) Cable Length	727A3101

[Instruction Sheet Available Online](#)

# Cables



## Geophone Extension Cable

Includes connectors. (Blue connector sleeve.)

Description	Code
10 m (32.8 ft) Cable Length	727A3501
30 m (98.4 ft) Cable Length	727A3502
75 m (246.1 ft) Cable Length	727A3503



## Linear Microphone Extension Cable

Includes connectors. (Red connector sleeve.)

Description	Code
10 m (32.8 ft) Cable Length	727A3601
30 m (98.4 ft) Cable Length	727A3602
75 m (246.1 ft) Cable Length	727A3603



## Sound Microphone Extension Cable

Includes connectors. (Green connector sleeve.)

Description	Code
10 m (32.8 ft) Cable Length	727A3701
30 m (98.4 ft) Cable Length	727A3702
75 m (246.1 ft) Cable Length	727A3703

## External Trigger Cable

External trigger cable used to remotely trigger a Micromate Plus monitoring unit. Note: Requires the factory-installed Auxiliary Port option (P/N: 727A3301).



Description	Code
2 m (6.6 ft) Cable Length	727A3901

## External Cable for Antennas

Extension cable for Wi-Fi, GPS, or Cellular antennas.



Description	Code
1 m (3.3 ft) Cable Length	300-100161-000

## Power Supply

Power supply for either North America or International charging of the Micromate Plus.



Description	Code
Power Adaptor (Top)	727A2801
3-Prong Cable (NA - bottom left)	300-100160-000
3-Prong Cable (Intl - bottom right)	727A4501

# Cables

## Flying Lead Power Cable



Allows the Micromate Plus unit to be connected to an external power source such as a battery or solar panel.

Description	Code
2 m (6.6 ft) Cable Length	727A4401

## Waterproof USB-C Cable



Waterproof USB-C cable for use when a Micromate Plus unit will be left exposed to the elements.

Description	Code
2 m (6.6 ft) Cable Length	727A4101

## Standard USB-C Cable



For use when a Micromate Plus is protected from the elements.

Description	Code
1.8 m (6 ft) Cable Length	300-100159-000

## GPS Antenna with Cable



GPS Antenna TNC with a TNC male plug connector. Includes magnetic base.

Description	Code
2 m (6.6 ft) Cable Length	300-000021-000



# Accessories and Upgrades



Shown with unit (not included)

## Protective Boot Cover

Protective rubber boot with a clear plastic cover that can hinge on either end. Provides protection from water, dust and impact from foreign objects. Various mounting options exist for diverse installation requirements. Includes a stainless steel hardware kit (screws and washers) [not shown].

Description	Code
Rubber Boot with Plastic Cover	727A3401

## Carrying Case

Soft carrying case used to store and carry the Micromate Plus base units and accessories. Foam insert included.



Description	Code
Fabric Carrying Case	727A4201

## Remote Alarm Controller



Self-contained controller complete with a high power auxiliary drive capability for external sirens and other alarms.

Description	Code
2 m (6.6 ft) Cable Length	727A4701

## Geophone Levelling Plate

Package includes leveling plate, feet, and integrated spirit level. For use with Micromate Plus geophones.



Description	Code
Levelling Plate Kit	727A4301



## Auxiliary Port

For use with a remote alarm or an external trigger cable on the Micromate Plus monitoring unit. Note: Must be configured by the manufacturer.

Description	Code
Factory-installed AUX Port	727A3301

## Geopotting

Sealing of geophones with epoxy to prevent moisture ingress.



Description	Code
Factory-installed geopotting	GEOPOTTING

## Replacement Parts



### Triaxial Geophone Mounting Spike

Geophone spikes for use with InstanTel Triaxial Geophones or monitors with internal geophones. Set of three spikes.

Description	Code
Spike length 7.6 cm (3 in)	1100241



### Microphone Windscreens

Foam cover for use with InstanTel Linear and Sound Level Microphones (P/N: 721A0201, 721A2301, 720A1801, 720A5101, 720A4801, 714A9801, 714A2001, 714A5501, 727A3001, or 727A3101).

Description	Code
For Sound Level Microphones	72702901
For Linear Microphones	410-720001-000



### Dust Cap Cover

Replacement dust covers for the Micromate Plus unit connectors. Sold individually.

Description	Code
For Sound Level Microphone, USB-C, and AUX Connectors	72701701
For Geophone Connector	72701801
For Antenna Connectors	72701901
For Linear Microphone and Power	72702101

### Microphone Stand Assembly

Three-piece assembly for use with InstanTel Linear and Sound Level Microphones (P/N: 721A0201, 721A2301, 720A1801, 720A5101, 720A4801, 714A9801, 714A2001, 714A5501, 727A3001, or 727A3101).



Description	Code
Total height 80 cm (31.5 in)	720A6001

### Replacement Antenna

Sold individually. (Left to Right: Cellular, Wi-Fi, GPS)



Description	Code
Cellular	727A4901
Wi-Fi	727A4801
GPS	727A5001

### Cable Dust Cap Cover

Replacement dust covers for the Micromate Plus unit sensors. Sold individually.



Description	Code
For Linear Microphone and Power	727A2801
For Sound Level Microphone, USB-C and AUX Connectors	727A2901
For Geophone Connector	727A3001



## How a Micromate Monitoring Unit Connects Using Vision // and THOR Software Systems

The Micromate monitoring unit's geophone and microphone sensors capture every relevant vibration from a host of industrial applications. Using Waveform, Histogram or a combination of the two modes, the Micromate monitoring unit gathers event data and then transmits the data to a computer or mobile device via a direct connection, USB, or via a cellular modem over the internet.

# System Overview



## SMALL ENOUGH TO FIT IN THE PALM OF YOUR HAND

Seamlessly record vibration, sound/noise, or air overpressure with just one monitoring unit. The Micromate monitoring unit was custom engineered with a rugged and reliable design to withstand harsh conditions, including water-resistance. Experience zero dead-time that includes 10 to 15 days of uninterrupted monitoring with the provided internal battery. The 15 MB of memory can store up to 1,000 events, upgradeable to 4,000 events with the extended 60 MB memory option.

The Micromate monitoring unit is light and portable. It is small enough to fit in the palm of your hand and features a high-resolution color touch-screen display with a QWERTY key pad. It features a built-in USB port so you can easily connect a USB flash drive to transfer events or even update the unit's firmware – quickly, easily and all in the field without the need of a computer.

The Micromate monitoring unit comes with three channels for a triaxial geophone and one channel for an air overpressure or sound level microphone. Each base unit is coupled with a geophone and configured to meet one of the following industry standards:

- International Society of Explosives Engineers (ISEE-2022)
- Deutsches Institut für Normung (DIN 45669-1)
- Swedish Blasting (SS4604866)
- Swedish Pile Driving (SS025211)

Recommendation: This device connects to an external modem. While using modems, safe security measures should be undertaken, such as strong, unique passwords and the use of trusted IP addresses (IP allowlisting/whitelisting).



Micromate shown with Protective Boot

## WORKING WITH INSTANTEL SOFTWARE SYSTEMS

The Micromate seamlessly integrates with both Vision II and THOR software platforms, giving you complete flexibility. Use Vision II for full remote management, or turn to THOR for in-depth, advanced analysis. Whatever your project demands, Micromate delivers—compact in size, powerful in performance.



Custom engineered with a rugged and reliable design to withstand harsh conditions, including water-resistance.



The base unit features geophones calibrated to meet international standards, including ISEE and DIN. For a complete list of standards, refer to the Specification Sheet 982-721001-000.

The Micromate is designed for versatility and can easily switch from one application to another. Its range of applications include blasting, pile driving, demolitions, sound and noise, and construction.

Description	Code
Micromate ISEE Unit	727A2501
Micromate DIN Unit	727A2601
Micromate Swedish Blasting	727A3601
Micromate Swedish Pile Driving	727A3801

Micromate Specification Sheet Available Online

Tutorial videos available on YouTube.

# Geophones and Microphones

Micromate geophones and microphones are engineered for reliability and versatility, delivering precise monitoring of ground vibrations, sound, and air overpressure. With consistent, dependable performance, they help you stay compliant with the world's most widely recognized international standards.



## ISEE Triaxial Geophone

2 - 250 Hz geophone calibrated to the ISEE-2022 standard. Includes mounting spikes (P/N: 1100241). Note: Must be calibrated to Micromate base unit (P/N: 721A2501).

Description	Code
2 m (6.6 ft) Cable Length	721A2901
5 m (16.4 ft) Cable Length	721A2902



## Swedish Blasting Geophone

5 - 300 Hz geophone. Calibrated to the SS4604866:2011 standard. Includes Triaxial Geophone Mounting Spikes (P/N: 110241). Note: Must be calibrated to a Micromate base Unit (P/N: 721A3601).

Description	Code
2 m (6.6 ft) Cable Length	721A3501
5 m (16.4 ft) Cable Length	721A3502

## DIN Triaxial Geophone



1 - 315 Hz geophone calibrated to the DIN 45669-1 standard. Includes mounting spikes (P/N: 1100241). Note: Must be calibrated to Micromate base unit (P/N: 721A2601).

Description	Code
2 m (6.6 ft) Cable Length	721A3301
5 m (16.4 ft) Cable Length	721A3302

## Swedish Pile Driving Geophone



2 - 150 Hz geophone. Calibrated to the SS025211 standard. Includes mounting spikes (P/N: 1100241). Note: Must be calibrated to Micromate base unit (P/N: 721A3801).

Description	Code
2 m (6.6 ft) Cable Length	721A3701
5 m (16.4 ft) Cable Length	721A3702



## Triaxial Borehole Geophone

Geophone calibrated to the same standard as the Micromate base unit. Size 64 mm (2.5 in). Note: requires a 7.6 cm (3 in) minimum diameter borehole for installation.



Description	Code
30 m (98.4 ft) Cable Length	721A2401
75 m (246.1 ft) Cable Length	721A2402

[Instruction Sheet Available Online](#) 

## Linear Microphone

2 - 250 Hz linear microphone. Measures air overpressure on a linear scale. Calibrated to the ISEE-2022 standard. (Shown with windscreen P/N: 1712.) Includes a Microphone Stand Assembly (P/N: 720A6001).



Description	Code
2 m (6.6 ft) Cable Length	721A0201

[Instruction Sheet Available Online](#) 

## Sound Level Microphone

10 Hz - 20 kHz Class 1 sound/ noise microphone. Calibrated to the IEC 61672-1 standard. (Shown with windscreen P/N: 410-720001-000.) Includes a Microphone Stand Assembly (P/N: 720A6001).



Description	Code
2 m (6.6 ft) Cable Length	721A0201

[Instruction Sheet Available Online](#) 

## Accessories

### Triaxial Geophone Leveling Plate



Includes leveling plate, feet and an integrated spirit level. For use with Micromate, Minimate Pro, Minimate Plus, Blastmate III, and Minimate Blaster external geophones. Note: Geophone not included.

Description	Code
Leveling Plate with Hardware	714A1801

### Remote Alarm Controller



Self-contained controller complete with a high-power auxiliary drive capability for external sirens and other alarms. Note: Requires the factory installed, Auxiliary Port option on the Micromate monitoring unit.

Description	Code
2 m (6.6 ft) Cable Length	721A0901

[Instruction Sheet Available Online](#)

### Protective Boot and Cover



Protective rubber boot with a clear plastic cover that can hinge on either end. Provides protection from water, dust and impact from foreign objects. Various mounting options exist for diverse installation requirements.

Description	Code
Rubber Boot with Plastic Cover	721A0301

[Instruction Sheet Available Online](#)

### Triaxial Geophone Wall Mounts

Used to mount a triaxial geophone to a wall or other vertical surface. Includes bolts, aluminum mounting block, and instructions. (Geophone not included). Note: This optional upgrade must be performed by the manufacturer and modifies a Micromate monitoring unit Triaxial Geophone to a wall mount orientation.



Description	Code
Wall Mount Kit	718A0101
Modification for Wall Mounting	721A3001

### Portable Field Printer

Battery operated printer that includes a USB cable. Lightweight and easily transported for printing hard copies of event reports in the field. Note: This printer has custom firmware specifically for the Micromate monitoring unit and must be purchased through InstanTel to ensure compatibility.



Description	Code
Portable Printer	721A4301
Printer Paper (Contains 5 Rolls)	TP5000-80-25C

[Instruction Sheet Available Online](#)

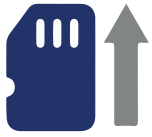
### Carrying Case

Soft carrying case used to store and carry the Micromate base units and accessories. Foam insert included.



Description	Code
Carrying Case	721A3101

## Upgrades and Power



### Extended Memory

Increases the internal non-volatile memory in the Micromate monitoring unit from 15 MB to 60 MB. This optional upgrade increases the storage capacity from 1,000 events to 4,000 events. Note: Must be configured by the manufacturer.

Description	Code
Extended Memory	721A1101

### Extended Battery Life



Extends the battery life of the Micromate monitoring unit from 10 days to 15 days. Note: Must be configured by the manufacturer.

Description	Code
Extended Battery Life	721A1301

### Power Adaptor



Mini USB power supply for use with Micromate monitoring units in North America. Input 100 --240V AC. Output 5V DC, 1A.

Description	Code
North America Power Adaptor	370-000024-000

### Geopotting

Sealing of geophones with epoxy to prevent moisture ingress.



Description	Code
Factory-installed geopotting	GEOPOTTING

### Auxiliary Port

For use with a remote alarm or an external trigger cable on the Micromate monitoring unit. Note: Must be configured by the manufacturer.



Description	Code
Factory-installed AUX Port	721A0101

### Universal Charger

Power adaptor for use with Micromate monitoring units internationally. Input 110-240V AC 50/60Hz, Output 5V DC, 1A.



Description	Code
International Charger	721A1201



# Cables

## 10 m (32.8 ft) Extension Cable



For use with Micromate monitoring unit geophones, borehole geophones and microphones. Includes the connectors.

Description	Code
10 m (32.8 ft) Cable Length	721A0803

## 30 m (98.4 ft) Extension Cable



For use with Micromate monitoring unit geophones, borehole geophones and microphones. Includes the connectors.

Description	Code
30 m (98.4 ft) Cable Length	721A0801



## 75 m (246.1 ft) Extension Cable

For use with Micromate monitoring unit geophones, borehole geophones and microphones. Includes the connectors.

Description	Code
75 m (246.1 ft) Cable Length	721A0802

## Custom Extension Cable Kit

Kit for splicing custom length extension cables for Micromate monitoring unit geophones, borehole geophones and microphones in the field. Includes two over-molded cables. One cable has a male connector and the other cable has a female connector on one end. The other end of each cable has no connector.



Description	Code
2 m (6.6 ft) Cable Length	721A3201

## External Trigger Cable



Used to remotely trigger a Micromate monitoring unit. Note: Requires a factory-installed Auxiliary Port option (P/N: 721A0101)

Description	Code
2 m (6.6 ft) Cable Length	721A1401

## USB to RS-232 Cable

Used for connecting a Micromate monitoring unit to a cellular modem.



Description	Code
1.8 m (5.9 ft) Cable Length	721A1001

Instruction Sheet Available Online



## How a Minimate Pro™ Monitoring Unit Connects Using THOR™ and Vision™ Software Systems

The Minimate Pro4 monitoring unit (4 channel) and Minimate Pro6 monitoring unit (6 channel) geophone and microphone sensors, along with the advanced sensors (High Frequency Triaxial Geophone, High Frequency Triaxial Borehole Geophone, High Pressure Microphone, Hydrophone, 0.5g-50g-500g Accelerometers) capture all relevant vibrations (up to 65,536 S/s) from a host of industrial applications. Using Waveform, Histogram or a combination of the two modes, the Minimate Pro monitoring unit captures event data and then transmits the data to a computer or mobile device via a direct connection or via a cellular modem over the internet.

# System Overview



## Minimate Pro™

# Minimate Pro™

## ADVANCED MONITORING FOR CHALLENGING APPLICATIONS

Experience a unique set of advanced monitoring capabilities when it comes to recording vibration, sound/noise, or air overpressure. Designed to weather the most extreme conditions, the Minimate Pro monitoring unit can handle anything you can throw at it. It features a rugged cast aluminum case with a waterproof rating of IP67, making it easy to monitor in wet conditions.

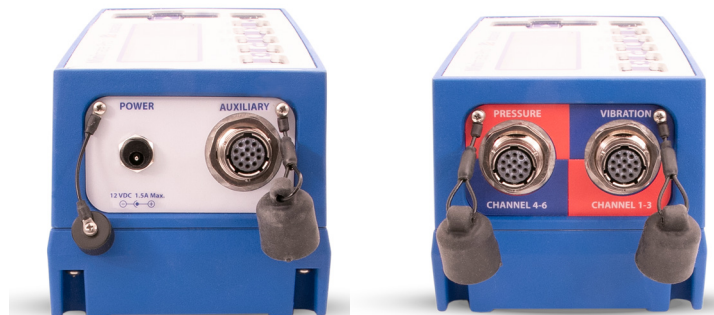
For those challenging applications, such as tunneling, the Minimate Pro monitoring unit includes EMI shielding and built-in noise and anti-aliasing filters to reduce noise and electrical interference.

The Minimate Pro monitoring unit allows you to never miss an event with its zero dead-time.

Enjoy up to 10 days of uninterrupted monitoring with the provided internal battery and 64 MB of memory that can store up to 8,000 events, upgradeable to 32,000 events with the extended 240 MB memory option.

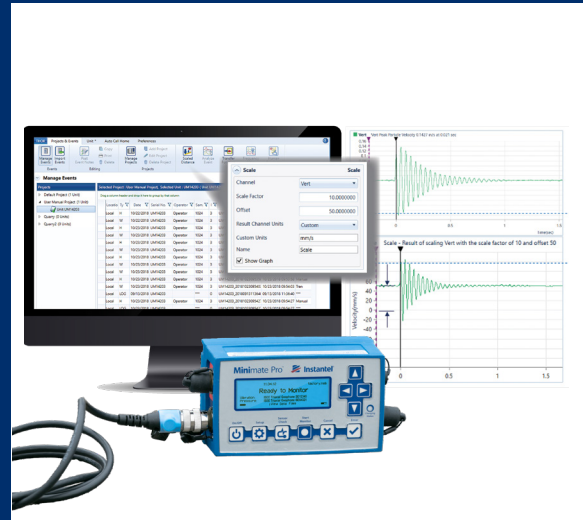
The Minimate Pro monitoring unit also boasts advanced recording and reporting features. An arsenal of advanced sensors enhance its monitoring capabilities, recording up to 65,536 samples per second on all channels. With the Minimate Pro Series you can connect accelerometers, high frequency geophones, hydrophones or high pressure microphones. Use an InstanTEL splitter box, and connect up to six hydrophones on one Minimate Pro6, or connect a Sound Level Microphone for sound playback.

Choose between the four channel Minimate Pro4 and the six channel Minimate Pro6 base units and configure it to one of the following industry standards: International Society of Explosives Engineers (ISEE-2022) or Deutsches Institut für Normung (DIN 45669-1).



## ADVANCED MONITORING WITH THOR ADVANCED SOFTWARE

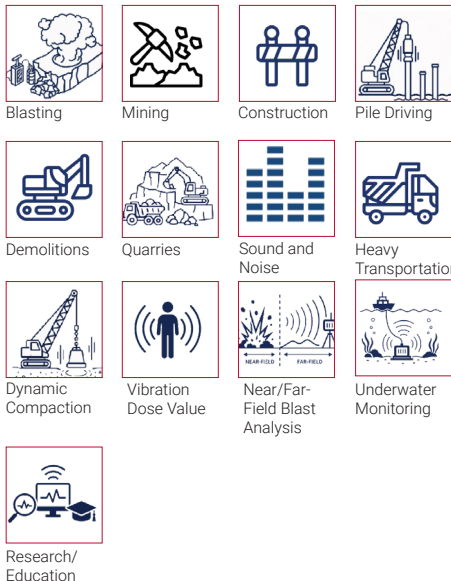
The Minimate Pro series along with advanced sensors and THOR Advanced can convert waveform data between velocity, acceleration, and displacement. Data can be filtered, truncated, frequency weighted, displayed in third-octave bands, and more. Playback sound clips or perform signature hole analysis and the effects of vibrations calculated with the Human Exposure feature.



Powerful monitoring and analysis in one device.

The Minimate Pro is a rugged, high-performance monitoring solution engineered for demanding environments. It offers advanced monitoring capabilities along with a comprehensive selection of compliance standards and features.

Suitable for a wide range of applications—including underwater monitoring, mining, quarrying, human exposure, and heavy construction activities—it provides reliable performance across diverse project conditions.



Description	Code
Minimate Pro4 Base Unit	720A2301
Minimate Pro6 Base Unit	720A2401

[Minimate Pro4 Monitoring Unit Specification Sheet Available Online](#)

[Minimate Pro6 Monitoring Unit Specification Sheet Available Online](#)

# Geophones and Microphones

Minimate Pro geophones and microphones are engineered to support a wide range of applications, including high-frequency measurements and specialized monitoring requirements.



## ISEE Triaxial Geophone

2 - 250 Hz geophone calibrated to the ISEE-2022 standard. Includes mounting spikes (P/N: 1100241).

Description	Code
2 m (6.6 ft) Cable Length	720A2001
8 m (26.2 ft) Cable Length	720A2004



## Vibration Dose Value (VDV) Geophone

1 - 80 Hz geophone calibrated to the DIN 45669-1 standard. Includes mounting spikes (P/N: 1100241).  
Note: The VDV functionality requires THOR Advanced software (P/N: 72300201).

Description	Code
2 m (6.6 ft) Cable Length	720A2003
8 m (26.2 ft) Cable Length	720A2006

## DIN Triaxial Geophone

1 - 315 Hz geophone calibrated to the DIN 45669-1 standard. Includes mounting spikes (P/N: 1100241).



Description	Code
2 m (6.6 ft) Cable Length	720A2002
8 m (26.2 ft) Cable Length	720A2005

## High Frequency Triaxial Geophone

30 - 1000 Hz geophone. For near-field monitoring with a range up to 2540 mm/s (100 in/s). Includes mounting spikes (P/N: 1100241).  
Note: Requires THOR Advanced software (P/N: 72300201).



Description	Code
2 m (6.6 ft) Cable Length	720A4701

Instruction Sheet Available Online



## ISEE Triaxial Borehole Geophone

2 - 250 Hz geophone calibrated to the ISEE-2022 standard for Minimate Pro4 or Minimate Pro6 devices. Borehole geophone diameter 6.4 cm (2.5 in). Note: Requires a 7.6 cm (3 in) minimum diameter borehole for installation.

Description	Code
30 m (98.4 ft) Cable Length	720A5601

[Instruction Sheet Available Online](#)



## Triaxial High Frequency Borehole Geophone

30 - 1000 Hz geophone for near-field monitoring. Borehole geophone diameter: 6.4 cm (2.5 in). Note: Requires a 7.6 cm (3 in) minimum diameter borehole for installation. Note: Requires THOR Advanced software (P/N: 72300201).

Description	Code
30 m (98.4 ft) Cable Length	720A5801

[Instruction Sheet Available Online](#)



## Sound Level Microphone

10 Hz - 20 kHz Class 1 sound/noise microphone. Calibrated to the IEC 61672-1 standard. Includes a microphone stand (P/N: 720A6001) and windscreen (P/N: 410-720001-000).

Description	Code
2 m (6.6 ft) Cable Length	720A5101

[Instruction Sheet Available Online](#)

## DIN Triaxial Borehole Geophone

1 - 315 Hz geophone calibrated to the DIN 45669-1 standard for Minimate Pro4 or Minimate Pro6 devices. Borehole geophone diameter 6.4 cm (2.5 in). Note: Requires a 7.6 cm (3 in) minimum diameter borehole for installation.



Description	Code
30 m (98.4 ft) Cable Length	720A5701

[Instruction Sheet Available Online](#)

## Linear Microphone



2 - 250 Hz linear microphone. Measures air overpressure on a linear scale. Calibrated to the ISEE-2022 standard. Includes a microphone stand (P/N: 720A6001) and windscreen (P/N: 1712).

Description	Code
2 m (6.6 ft) Cable Length	720A1801

[Instruction Sheet Available Online](#)

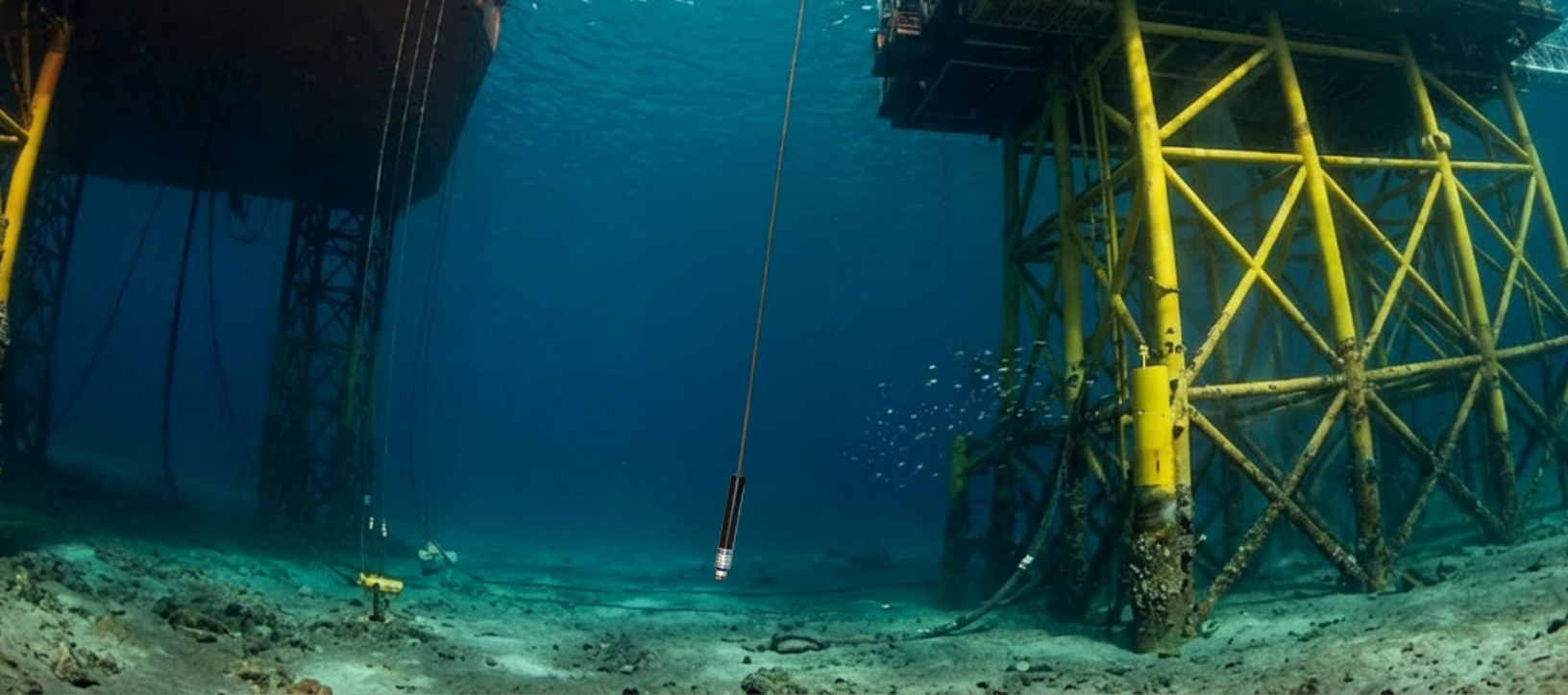
## High Pressure Microphone



5 - 1000 Hz, up to 68.9 kPa (10 psi) high pressure microphone. Measures air overpressure in close proximity or confined blasting situations. Includes microphone stand (P/N: 720A6001) and windscreen (P/N: 1712). Note: Requires THOR Advanced software (P/N: 72300201).

Description	Code
2 m (6.6 ft) Cable Length	720A4801

[Instruction Sheet Available Online](#)



## Hydrophone

8 - 500 Hz hydrophone. Measures overpressure in water.  
 Note: Requires THOR Advanced software (P/N: 72300201).

Description	Code
60 m (196.9 ft) Cable Length	720A5001

Instruction Sheet Available Online

## 500 g Accelerometer



1– 3000 Hz. Measures accelerations of up to 500 g for near-field blasting applications. Package includes one Cable For 50 g & 500 g Accelerometers (P/N: 002C10). Requires either a Uniaxial Accelerometer Adaptor Cable (P/N: 720A4901) or a Triaxial Accelerometer Adaptor Cable (P/N: 720A5201).  
 Note: Requires THOR Advanced software (P/N: 72300201).

Description	Code
500 g Accelerometer	720A6401

Instruction Sheet Available Online

## 0.5g Accelerometer



0.5 - 500 Hz. Measures low frequencies and accelerations for sensitive applications. Package includes one Cable For 0.5g Accelerometers (P/N: R6-2-J5A-6). Requires either a Uniaxial Accelerometer Adaptor Cable (P/N: 720A4901) or a Triaxial Accelerometer Adaptor Cable (P/N: 720A5201).  
 Note: Requires THOR Advanced software (P/N: 72300201).

Description	Code
0.5 Accelerometer	714A7101

Instruction Sheet Available Online

## 50 g Accelerometer



1– 3000 Hz. Measures accelerations up to 50 g for near-field blasting applications. Package includes one Cable for 50 g & 500 g Accelerometers (P/N: 002C10). Requires either a Uniaxial Accelerometer Adaptor Cable (P/N: 720A4901) or a Triaxial Accelerometer Adaptor Cable (P/N: 720A5201).  
 Note: Requires THOR Advanced software (P/N: 72300201).

Description	Code
50 g Accelerometer	720A6301

Instruction Sheet Available Online

## Accessories



### Accelerometer Triaxial Mounting Block (50 g and 500 g)

Used to mount up to three uniaxial accelerometers to measure in a triaxial configuration. For use with 50 g (P/N: 72002701), or 500 g (P/N: 72002401) accelerometers.

Description	Code
Accelerometer Mounting Block	080B11

### Triaxial Geophone Leveling Plate



Includes leveling plate, feet and integrated spirit level. For use with Micromate, Minimate Pro, Minimate Plus, Blastmate III and Minimate Blaster external geophones. Note: Geophone not included.

Description	Code
Triaxial Geophone Leveling Plate	714A1801

### Remote Alarm Controller

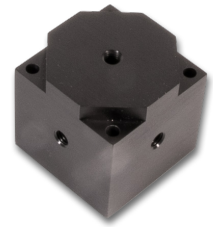


A self-contained controller complete with a high power auxiliary drive capability used for external sirens and other alarms.

Description	Code
5 m (16.4 ft) Cable Length	720A3901

Instruction Sheet Available Online 

### Accelerometer Triaxial Mounting Block (0.5 g)



Used to mount up to three uniaxial accelerometers to measure in a triaxial configuration. For use with 0.5 g (P/N: 714A7101) accelerometers.

Description	Code
Mounting Block (0.5 g)	400-000289-000

### Triaxial Geophone Wall Mounts

Used to mount a triaxial geophone to a wall or other vertical surface. Includes bolts, aluminum mounting block, and mounting instructions. (Geophone not included). Note: This optional upgrade must be performed by the manufacturer and modifies a Minimate Pro monitoring unit Triaxial Geophone to a wall mount orientation.



Description	Code
Wall Mount Kit	718A0101
Modification for Wall Mounting	720A6201

### Splitter Box

Used to connect up to three uniaxial sensors on a Minimate Pro monitoring unit.



Description	Code
2 m (6.6 ft) Cable Length	720A5501

Instruction Sheet Available Online 



---

## USB Serial Adaptor Kit

Converts an RS-232 to a USB 2.0 connector. For use with a serial cable to download event data from a Minimate Pro, Minimate Plus, Blastmate III or Minimate Blaster to a PC.



Description	Code
USB Serial Adaptor Kit	714A7001

---

## Carrying Case

Soft carrying case used to store and carry the Minimate Pro base units and accessories. Foam insert included.



Description	Code
Minimate Pro Carrying Case	720A6501

# Upgrades and Power



Minimate Pro unit sold separately.

## GPS Upgrade

Adds GPS capability to the Minimate Pro monitoring unit . Allows the unit to synchronize the recorded event data's time within 100 microseconds. Note: Requires a factory-installed GPS port that must be configured by the manufacturer.

Description	Code
GPS Upgrade	720A6601



## Geopotting

Sealing of geophones with epoxy to prevent moisture ingress.

Description	Code
Factory-installed geopotting	GEOPOTTING

## Universal Charger



Power adaptor for use with Minimate Pro monitoring units internationally. Input 110-240V AC 50/60Hz. Output 12V DC, 1.67A.

Description	Code
Universal Charger	712A5301

## Extended Memory

Increases the internal non-volatile memory in the Minimate Pro unit from 64 MB to 240 MB. This optional upgrade increases the storage capacity from 8,000 events to 32,000 events. Note: Must be configured by the manufacturer.



Description	Code
Extended Memory	720A5901

## Modification for Wall Mounting

Modification must be performed by manufacturer and modifies a Minimate Pro triaxial geophone to a wall mount orientation.



Description	Code
Wall Mount Modification	720A6201

## Power Adaptor

Power adaptor for use with Minimate Pro monitoring units in North America. Input 110V AC. Output 12V DC, 1A.



Description	Code
Power Adaptor	370-000002-000

# Cables



## 30 m (98.4 ft) Extension Cable

Includes a shielded cable for use with Minimate Pro monitoring unit geophones, borehole geophones and microphones. Includes connectors.

Description	Code
30 m (98.4 ft) Cable Length	720A3301

## 75 m (246.1 ft) Extension Cable

Includes a shielded cable for use with Minimate Pro monitoring unit geophones, borehole geophones and microphones. Includes connectors.



Description	Code
75 m (246.1 ft) Cable Length	720A3302



## Null Modem Cable

Includes a DB-9M cable. For use when connecting a cellular modem to a Minimate Pro monitoring unit. Note: One null modem cable is required for each monitoring unit.

Description	Code
2 m (6.6 ft) Cable Length	720A3401

## Serial Cable

Includes a RS-232 cable for connecting a Minimate Pro monitoring unit to a PC. Note: Requires a PC with a 9-pin serial connector or USB Serial Adaptor Kit, (P/N: 714A7001).



Description	Code
1.7 m (5.6 ft) Cable Length	720A3101



## Ethernet Cable

Includes a RJ-45 high-speed network download cable. Transfers events and setup files to a PC over a network connection for faster download speeds.

Description	Code
1.5 m (4.9 ft) Cable Length	720A4101

## Make/Break Trigger Cable

Starts recording an event when either the wires make or break the contact. Can be used with an operator's button or to correspond with a blast detonation. Package includes connectors, cable and instructions.



Description	Code
2 m (6.6 ft) Cable Length	720A3501

Instruction Sheet Available Online



## Custom Cable Extension Kit

Custom length extension cable for Minimate Pro monitoring units (ordered by the m/ft). Must be purchased with Custom Cable Connector Assembly.

Description	Code
Connector Assembly	720A3305
Extension Cable	301-000034-000

## Remote Alarm/RS-232 Splitter Cable

For use when both a Remote Alarm Controller and a modem must be connected to a Minimate Pro monitoring unit at the same time.



Description	Code
45.7 cm (18 in) Cable Length	720A4001

## Uniaxial Accelerometer Adapter Cable



Includes a cable that provides power from a Minimate Pro monitoring unit to operate an accelerometer.

Description	Code
2 m (6.6 ft) Cable Length	720A4901

Instruction Sheet Available Online

## Triaxial Accelerometer Adapter Cable

Includes a cable that provides power from a Minimate Pro monitoring unit to operate up to three accelerometers in a uniaxial configuration.



Description	Code
2 m (6.6 ft) Cable Length	720A5201

Instruction Sheet Available Online



## Replacement Parts



### Triaxial Geophone Mounting Spike

Geophone spikes for use with InstanTel Triaxial Geophones or monitors with internal geophones. Set of three spikes.

Description	Code
Spike length 7.6 cm (3 in)	1100241



### Microphone Windscreens

Foam cover for use with InstanTel Linear and Sound Level Microphones (P/N: 721A0201, 721A2301, 720A1801, 720A5101, 720A4801, 714A9801, 714A2001, 714A5501, 727A3001, or 727A3101).

Description	Code
For Sound Level Microphones	1712
For Linear Microphones	410-720001-000



### 50 g and 500 g Accelerometer Cable

Replacement cable for 50 g and 500 g accelerometers.

Description	Code
3 m (9.8 ft) Cable Length	02C10

### Microphone Stand Assembly



Three-piece assembly for use with InstanTel Linear and Sound Level Microphones (P/N: 721A0201, 721A2301, 720A1801, 720A5101, 720A4801, 714A9801, 714A2001, 714A5501, 727A3001, or 727A3101).

Description	Code
Total height 80 cm (31.5 in)	720A6001

### Microphone Stand Extension Rod

Extends the Microphone Stand Assembly (P/N 720A6001) by an additional 27.4 cm (10.8 in).



Description	Code
Extension height 27.4 cm (10.8 in)	400-202220-000

### 0.5 g Accelerometer Cable



Replacement cable for 0.5 g Accelerometer.

Description	Code
2 m (6.6 ft) Cable Length	R6-2-J5A-6



## Connecting with InstanTEL Software Systems

Some projects require that monitoring activities and any exceedances be promptly communicated to project owners, regulatory authorities, or other stakeholders. Vision II, our cloud-based data hosting platform, offers real-time, 24/7/365 access to monitoring data from any internet-connected device. While connected, your Micromate Plus (or Micromate with a modem) automatically uploads recorded event data to Vision II. With Vision II, you can effortlessly manage stakeholder access and compliance needs.

For other InstanTEL monitoring devices, such as the Minimate Pro, event reports can be automatically delivered to your computer using Auto Call Home technology with THOR software and a modem. With InstanTEL monitoring equipment installed permanently for the duration of your project, you can rely on continuous, worry-free operation—even in the demanding conditions of any project site.

## YOUR DATA 24/7/365, FROM ANYWHERE

Vision II, our new cloud-based monitoring platform, is designed with the user in mind. Store, report, and analyze event data recorded with an Instatel Micromate Plus or Micromate monitoring unit. With instant access to your projects, and featuring Live Data™, Vision II gives you a powerful array of tools to simplify your everyday tasks and keep all stakeholders informed.

### Live Data™

- View event data in near real-time from anywhere with an internet connection via laptop, smartphone, PC, or tablet.
- Prevent exceedances before they occur.

### Project and Device Management Made Easy

- Quickly add new projects, and set the warnings, alarms, and compliance standards.
- Add people and monitoring units to projects, or move them to another project with just a few clicks.
- Review your calibration requirements on the device dashboard.
- Gauge your device's critical information, like battery level, even when you are not on the job site or near the unit.

### SnapShot™ - Get Answers in One Look

- Easily identifiable results by color.
- Take the burden of time consuming reviews - see alerts and exceedances with just one look.
- See the status of your device in the field with gauges for critical information.
- Hover over any data point for values.

### Scalable

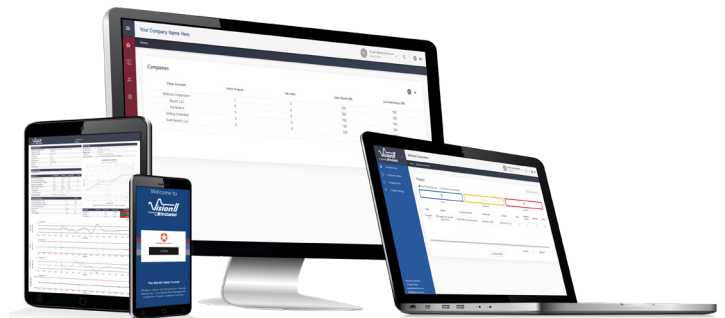
- Vision II can easily handle thousands of devices or projects.
- Manage everything, from simple to complex projects, all in one place.

### Warnings and Alerts

- You determine the warnings and alerts, set the limits for 'caution' and 'exceedance', and then receive the alert yourself or send it to a team member to take action.
- Receive messages via e-mail.
- Take preventative actions before reaching exceedances to prevent fines and project shutdowns.

### Designed with the User In Mind

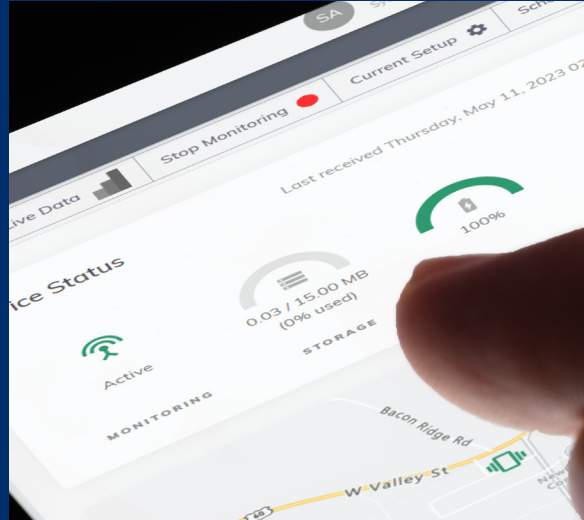
- Choose between English, French, Spanish, Portuguese, or Swedish —and switch between them effortlessly for a clear and user-friendly experience.
- Stay on top of monitoring, your way, on your schedule. Choose the days and times that work for you by accessing your profile and selecting your preferences.



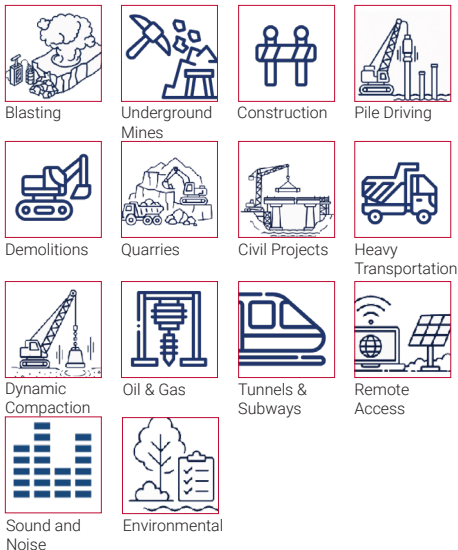
Please contact [sales@instatel.com](mailto:sales@instatel.com) to schedule an online demo.

## WORKING SEAMLESSLY WITH MICROMATE PLUS OR MICROMATE

Vision II enhances Micromate Plus and Micromate with a streamlined, cloud-based monitoring experience. Easily manage devices and projects while accessing real-time insights, with optional features like Live Data for continuous remote visibility and faster decision-making.



A powerful and flexible monitoring solution designed for reliable performance across a wide range of applications.



Vision II includes the following standard features:

- Company Management
- User Management
- Project Management
- Device Management
- Gauges for Critical Information
- Warnings and Alerts
- Compliance Graphs (downloadable, printable copy based on pre-set industry standards)

Note: the Micromate monitoring unit requires an external Sierra wireless modem (model numbers RV50, RV50X, and RV55) with Micromate firmware 11.0 or newer. Per device.

Description	Code
<b>Vision II with Micromate Plus</b>	<b>Included</b>
Vision II with Micromate	72600101
Micromate Activation Fee	72600201
Additional 10 GB Storage	72600301
SFTP Data Pass-Through	72600401
Live Data with Micromate Plus	72600801

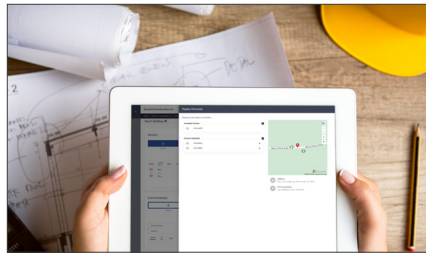
Tutorial videos available on YouTube.



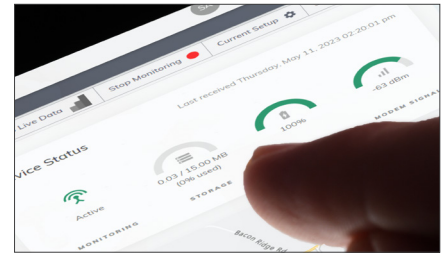
# Vision // Interface



View Events in Near Real-Time, 24/7/365



Project and Device Management



Gauges for Critical Information

Event Summary

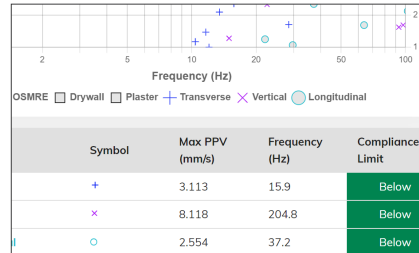
MON MAY 30 2025 - FRI JAN 06 2026

Alert Summary by Event | Alert Summary by Channel

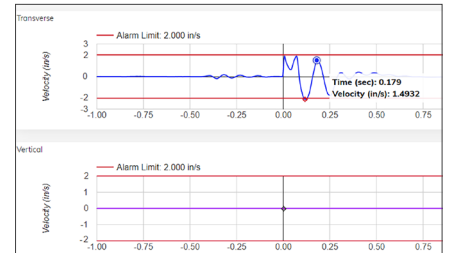
Category	Count
TOTAL	26
WARNINGS	3
ALARMS	0

Site	Transverse Peak (mm/s)	Vertical Peak (mm/s)	Longitudinal Peak (mm/s)	Sound Level Microphone Limit (dB)	Linear Microphone Limit (dB)
1	0.095	0.339	0.118	91.9	91.1
2	0.276	0.520	0.268	93.7	93.9
3	2.861	0.638	10.404	53.7	53.7
4	7.669	1.111	23.433	93.9	93.9
5	2.782	0.631	9.245	57.7	57.7

ShapShot™ - Answers in One Look



Compliance Graph with SnapShot™ Views for Compliance and Exceedance



Hover Over Any Data Point for Values

Compliance Report Graphs

Geophone | Sound Level Microphone | Linear Microphone | View Summary Table

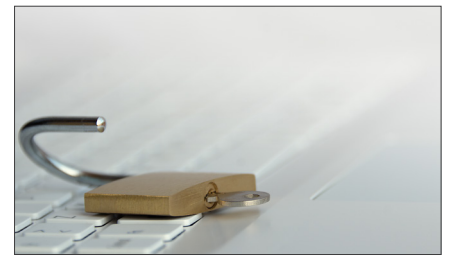
FFR Report Frequency

Limits	Geophone	Sound Level Microphone	Linear Microphone
Alert	10.8	100	100
Warning	25.4	100	100

Set Limits to Prevent Exceedances



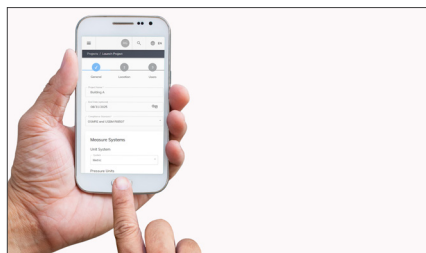
Scalable - Thousands of Units



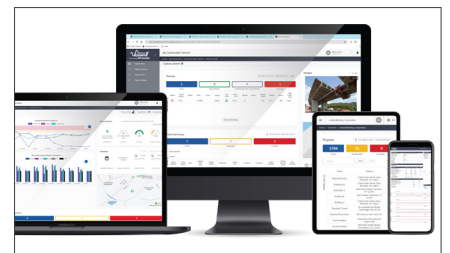
No Locked-In Monthly Fees



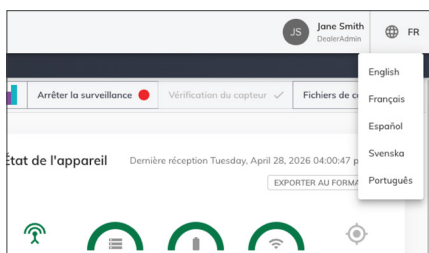
Real-Time Viewing from Anywhere



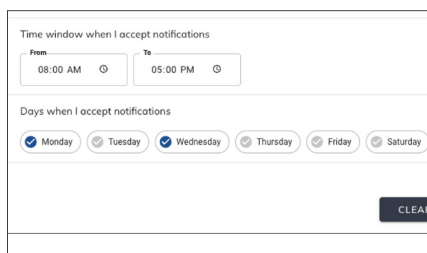
User-Friendly Interface



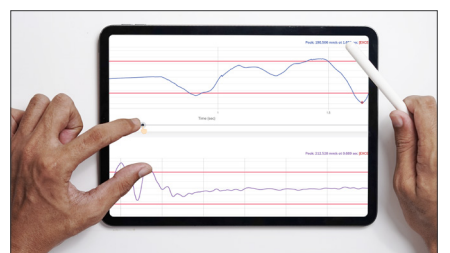
Access on a PC, laptop, tablet, or mobile phone.



Choice of Languages



Notification Scheduling



Pan and Zoom (Scaling and Range Control on Event Graphs)

View event data in near real-time, 24/7/365 from anywhere.

A feature of Vision II, our new cloud-based monitoring platform, Live Data allows you to view event data as it happens. Whether on the job site, in an office, or the comfort of your vehicle, you have data when you need it.



## Live Data™

- View event data in near real-time from anywhere with an internet connection via laptop, smartphone, PC, or tablet.

## Warning Alerts and Exceedance Alarms

- Take preventative action before exceedances occur.
- Determine the alerts and notifications you need by setting the limits for 'caution' and 'exceedance'. When you exceed your custom limits, you receive a notification by e-mail or SMS.
- Receive alerts yourself or send them to a team member who can take action.

## Real-Time Viewing Access

- View Live Data from anywhere - a jobsite, your office, or the comfort of your vehicle.

## Vision // Feature List

Feature	Description	Vision // (Per Micromate Plus) Included	Vision // (Per Micromate) P/N 72600101
Storage	5 GB of data storage per device transferable to the rest of your fleet.	●	●
Company Management	Add and manage as many companies as required. Add company logos.	●	●
Project Management	Add and manage as many projects as required.	●	●
Device Management	Add as many devices as required; list and search devices; assign/remove them from projects.	●	●
User Management	Add and manage as many users as required; assign roles.	●	●
Compliance Reports	Export and print a compliance report PDF based on industry standards, such as USBM RI8507 and OSMRE.	●	●
Custom Compliance Reports	Custom compliance chart settings (build a graph).	●	●
Gauges for Critical Information	Dashboard view of battery, connection, and storage.	●	●
Warnings and Alerts	Set limits for caution and exceedance; receive email warnings and alerts based on these limits.	●	●
Site Map	Visualize your entire project with an interactive map displaying the precise locations of all deployed devices.	●	●
Project Images	Add up to 50 images per project to help keep track of on-site installations.	●	●
Sensor Calibration Tracking	Quickly identify which sensors are due for calibration directly from the inventory screen, and use the summary donut at the top for a quick visual overview.	●	●

## Vision // Software Includes the Following Compliance Standards and Graphs

- Arrêté de 1994 (explosif)
- Australia 2187-2
- ANSI S2.71 RMS 1s
- AS 2187.2-2006
- Brazilian Standard NBR 9653
- British Standard 6472
- British Standard 7385
- Une 22-381-93 (Criterio Prevencion)
- DIN 4150
- France SNCF, Internal Procedure IN1226
- FTA (VdB)
- ICPE-Cirkulaire 86
- Indian CMRI, DGMS India (A) & (B)
- ISO Standards: 10816-2 RMS, 2631-2 and 8569
- JIS C 1510
- NCh 3577
- NF E90-020:2015
- NOM-026-SESH
- NS 8141 and NS 8141-1
- NS 8175 and 8176
- NZS/ISO 2631-2 Combined curves
- OfM 9/1997
- ÖNORM S9012 and S9020
- PN-B-02170
- SBR-A and SBR-B
- SN640 312a
- Swedish Blasting SS 4604866
- Swedish Pile Driving SS 025211
- Swedish Human Annoyance SS 4604861
- Swedish Air-Shock SS 025210 2
- Swiss SN 640 312a
- Toronto 514-1, 514-2
- Turkey Mining & Quarry
- USBM RI8507 And OSMRE



Create your own custom graph for local compliance requirements.

## Vision // Optional Feature List

Feature	Code	Description	Vision // Add-On (Individual)
FTP Data Pass-Through	72600401	Binary or JSON file data pass-through to a pre-determined IP address via FTP or SFTP (per company.) Pro-rated monthly, minimum one year.	●
Data Overage	72600301	Additional 10 GB data storage (per unit) - Annual with automatic renewal.	●
Live Data - Micromate	72600101	View events as they are happening, in near real time. (Included in Vision // for Micromate.)	●
Live Data - Micromate Plus	72600801	View events as they are happening, in near real time.	●
Custom Compliance Triggering		Create alerts and warnings on the entire spectrum of the compliance graph.	●
Data Push	72600901	Periodic data transfers to third-party websites.	●
Advanced Billing		Run reports for data usage and status for invoicing.	●
Watchdog Alerts		Low battery, geofence exceeded, unit not active, and more.	●
Third-Party Sensors		Add and monitor with third-party sensors.	●
InstanTel Advanced Sensors		Add and monitor with advanced InstanTel sensors, like a hydrophone.	●
Advanced Analysis		Frequency and signal analysis of data.	●
API Read		Application programming interface for direct queries to Vision // (per company.) Pro-rated monthly, minimum one year.	●
API Read-Write		Application programming interface for direct Vision // queries and control (per company.) Pro-rated monthly, minimum one year.	●
Fleet Management		Management of all devices, regardless of manufacturer.	●
Custom Dashboard		Change and design your dashboard; include widgets.	●
Custom Reports		Design the compliance report layout.	●
Standalone Server		Standalone version of Vision // hosted on an internal server.	●

Note: Items in grey are currently in development. Refer to the specification sheet for complete details.



## DESKTOP CONTROL FOR SEAMLESS EVENT MANAGEMENT

THOR is our software platform to store and manage event data on a local computer. With THOR software you can view data in the form of waveform charts, histogram bar-graphs and perform various analytic calculations to better understand your event data. THOR software let's you configure custom settings to manage your fleet of monitoring units and quickly update onboard parameters to adapt to specific monitoring requirements.

### Manage Connected Units Without Stepping Foot On Site

Units can be connected to THOR software remotely using wireless modems, when an event takes place, they send their data using THOR software's Auto Call Home service. This feature allows you to have a full view of your fleet's monitoring status in near real-time.

### Organize Event Data and How You See It

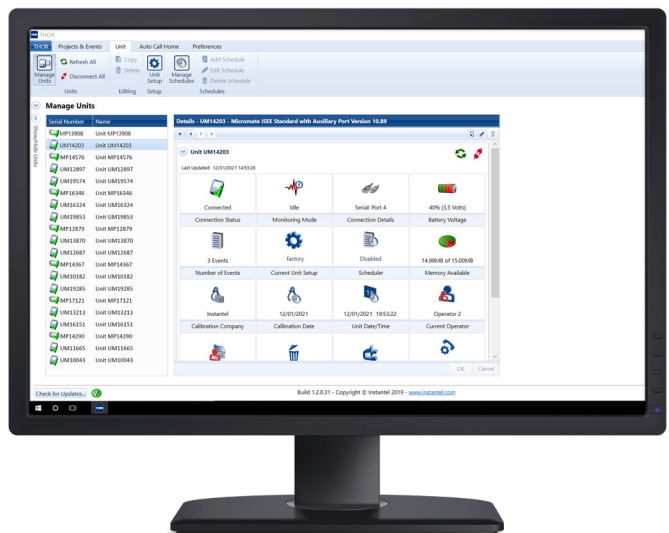
THOR software will automatically filter events into pre-configured projects so that you can sort events by site, contract or customer. Use customizable email groups to send automatic notifications and inform stakeholders when it counts.

### Interactive and Customizable Event Reporting

THOR software lets you quickly and easily identify trends in your event data and provides easy exporting of event reports into PDF format.

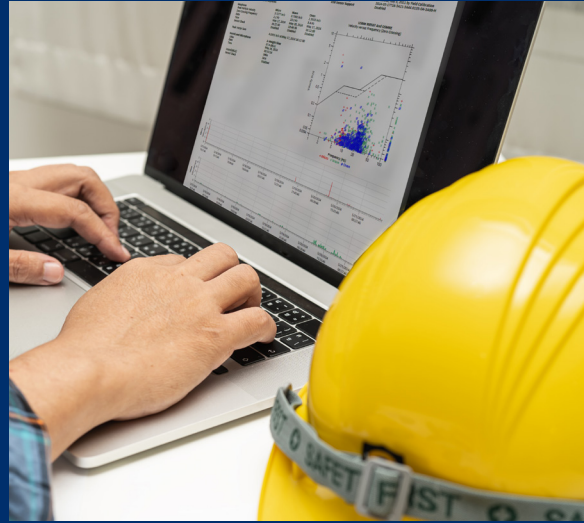
## THOR Advanced Software Includes the Following Compliance Standards and Graphs

- Australia 2187.2
- Brazilian Standard NBR 9653
- British Standard 7385
- BS 6472 -1992 (Curves 8, 16, 20, 32, 60, 90, 128)
- Criterio Prevencion (Une 22.381)
- Czech and Slovak Standard
- DIN 4150
- DIN 45669-1
- Function de Ponderation
- GFEE + Ministère Environnement
- Harmoniska Svagningar
- Indian CMRI, DGMS India (A) & (B)
- Indonesian SNI 7571
- ISEE Seismograph Specification -2022
- New Zealand 4403
- NOM-026-SESH
- NZS/ISO 2631-2:1989 Combined curves
- QLD APP Standard
- Recommendation GFEE/GFEE\*
- Swiss SN 640 312a (Mining/Pile Driving/Traffic)
- Toronto 514
- Turkey Mining & Quarry
- USBM RI8507 And OSMRE



## THE IDEAL PARTNER FOR THE MINIMATE PRO

THOR Software is a powerful desktop platform built to streamline the organization, analysis, and management of event data. Fully compatible with the Minimate Pro series of monitoring units, it leverages the Auto Call Home feature to deliver event data in near real-time while enabling efficient remote configuration and fleet management—all from a single, centralized interface.



Desktop control for organizing, analyzing, and remotely managing event data.

THOR Software is available in English, French, Spanish, and Swedish, making it accessible to teams worldwide. It is included with the Minimate Pro series and offers efficient project and event management, customized event reports, data export in multiple formats, including PDF, XML, ASCII, CSV, and more.



For a complete list of features, refer to the Specification Sheet 723B0101.



Download free at [Instantel.com](https://www.instantel.com)

Description	Code
THOR Software	Included

THOR Specification Sheet available online

Tutorial videos available on YouTube.

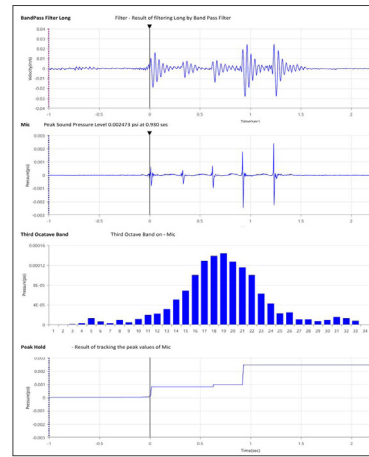


## ADVANCED DATA ANALYSIS ON EVENT DATA

With THOR Software's Advanced license, you can transform and analyze event data without ever altering the original file. Seamlessly convert waveform data between velocity, acceleration, and displacement, while applying advanced processing techniques such as filtering, truncation, frequency weighting, and third-octave band analysis. You can also playback sound clips, and build customized analysis workflows tailored to your needs—all supported by high-resolution, fully customizable event reports branded with your company logo.

THOR Advanced Software elevates your Minimate Pro monitoring unit into a powerful data analysis platform, moving beyond compliance into scientific and research-grade applications. Advanced tools like Signature Hole Analysis help optimize vibration and noise control, Human Exposure Reports assess the impact of blast

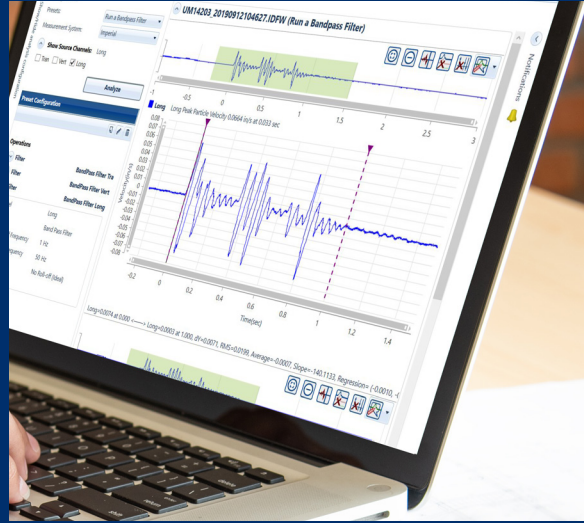
vibrations (VDV) on surrounding populations, and Transfer Function analysis enables detailed evaluation of structural response by comparing internal and external waveforms. Together, these capabilities deliver deeper insight and greater control for complex monitoring environments.



Perform Advanced Functions on Your Waveforms

## TURN THE MINIMATE PRO INTO A POWERFUL ANALYSIS TOOL

THOR Advanced is a powerful desktop platform for in-depth analysis and research, designed to work seamlessly with the Minimate Pro series. With advanced data processing, customizable workflows, and high-resolution reporting, it enables deeper insights—without ever altering your original event data. Connect specialized sensors for advanced monitoring capabilities.



Advanced Analysis. Deeper Insight. Total Control.



With THOR Advanced software you also benefit from specialized sensors and enhanced performance of standard sensors with sample rates up to 65,536 samples per second.

- Hydrophone (8 - 500 Hz)
- High-Frequency Geophone (30 - 1,000 Hz)
- High-Frequency Borehole (30 - 1,000 Hz)
- High-Pressure Microphone (up to 10 psi)
- Accelerometers: 0.5 g (0.5 - 500 Hz), 50 g (1 - 3,000 Hz), or 500 g (1 - 3,000 Hz)

### Compliance Graphs

- Waveform or Histogram compliance graphs available.
- Customize with your logo
- Export to PDF, XML, ASCII, or CSV

Description	Code
THOR Advanced	72300201

THOR Advanced Specification Sheet available online

Tutorial videos available on YouTube.





# Microphone Specifications

	STANDARD OVERPRESSURE LINEAR MICROPHONE			
	MICROMATE PLUS	MICROMATE	MINIMATE PRO COMPLIANCE	MINIMATE PRO ADVANCED
<b>PART NUMBER</b>	727A3101	721A0201	720A1801	720A1801
<b>RESPONSE STANDARD</b>	ISEE - 2022	ISEE-2022	ISEE-2022	N/A
<b>FREQUENCY WEIGHTING</b>	Linear			
<b>FREQUENCY RANGE</b>	2 - 250 Hz			
<b>AMPLITUDE RANGE</b>	Up to 1000 Pa (0.145 psi) [154 dB]	Up to 500 Pa (0.0725 psi) [148 dB]		
<b>TRIGGER LEVEL</b>	100 - 154 dB (L) / 2 - 1000 Pa 0.00029 - 0.145 psi	100 - 148 dB / 2 - 500 Pa 0.00029 - 0.0725 psi		0.256 - 500 Pa 0.000036 - 0.072515 psi
<b>SAMPLE RATES</b>	1,024 - 4,096 S/s			512 - 65,536 S/s
<b>RESOLUTION</b>	0.0305 Pa / 4.4262 x 10 <sup>-6</sup> psi (0.05 dB)	0.0156 Pa / 2.2626 x 10 <sup>-6</sup> psi (0.05 dB)		
<b>CABLE LENGTH</b>	2 m (6.6 ft)			
<b>MAXIMUM CABLE LENGTH</b>	75 m (246.1 ft)			
<b>SENSITIVITY</b>	N/A	N/A	N/A	0.0064452 V/Pa 44.4404804 V/psi
<b>TEMPERATURE RANGE</b>	-40° to 50°C (-40° to 122°F)	-40° to 50°C (-40° to 122°F)	-40 to 50°C (-40 to 122°F)	-40 to 50°C (-40 to 122°F)
<b>REQUIRED SOFTWARE</b>	VISION II	VISION II or THOR	THOR Compliance	THOR Advanced

	SOUND LEVEL MICROPHONE				HIGH PRESSURE MICROPHONE
	MICROMATE PLUS	MICROMATE	MINIMATE PRO COMPLIANCE	MINIMATE PRO ADVANCED	MINIMATE PRO ADVANCED SENSOR
<b>PART NUMBER</b>	727A3001	721A2301	720A5101	720A5101	720A4801
<b>RESPONSE STANDARD</b>	IEC 61672 CLASS 1			N/A	N/A
<b>FREQUENCY WEIGHTING</b>	A-Weight or C-Weight Response: Fast (125 ms) or Slow (1s)			Unfiltered	Linear
<b>FREQUENCY RANGE</b>	10 Hz - 20 kHz				5 - 1,000 Hz
<b>AMPLITUDE RANGE</b>	30 - 140 dB (max 160 dB)				Up to 69 kPa (10 psi) Max Pressure 1,724 kPa (250 psi)
<b>TRIGGER LEVEL</b>	33 - 140 dB		0.448 - 100 Pa (normal) 0.01424 - 25 Pa (sensitive)		0.03425 - 69 kPa (0.005 - 10 psi)
<b>SAMPLE RATES</b>	1,024 - 4,096 S/s		512 - 4,096 S/s	512 - 65,536 S/s	512 - 65,536 S/s
<b>RESOLUTION</b>	0.05 dB (Display Limit 0.1 dB)		0.03 Pa (normal) 0.89 mPa (sensitive)		0.00214 kPa (0.00031 Psi)
<b>CABLE LENGTH</b>	2 m (6.6 ft)				2 m (6.6 ft)
<b>MAXIMUM CABLE LENGTH</b>	75 m (246.1 ft)				75 m (246.1 ft)
<b>SENSITIVITY</b>	N/A		0.0038 V/Pa (normal) (5.511 X 10 <sup>-7</sup> V/psi) 0.1200 V/Pa (sensitive) (0.0000174 V/psi)		0.3222605 V/psi (0.0467044 V/kPa) <sup>1</sup>
<b>TEMPERATURE RANGE</b>	-20° to 55°C (-4° to 131°F)	-10° to 50°C (14° to 122°F)			N/A
<b>REQUIRED SOFTWARE</b>	VISION II	VISION II or THOR	THOR Compliance	THOR Advanced	THOR Advanced

1. See calibration certificate for nominal values.

# Micromate Plus Sensor Specifications

	MICROMATE PLUS			
	2M GEOPHONE TRIAXIAL/UNIAXIAL		7M GEOPHONE TRIAXIAL/UNIAXIAL	
			BOREHOLE GEOPHONE	
<b>PART NUMBER</b>	7270301	7270302	727A4001	727A4003
<b>RESPONSE STANDARD</b>	UP TO 254 mm/s (10 in/s) ISEE - 2022, DIN 45669-1, Swedish Blasting SS4604866, Swedish Pile Driving SS025211 Flat (Programmable) Mode		UP TO 254 mm/s (10 in/s) ISEE - 2022, DIN 45669-1, Swedish Blasting SS4604866, Swedish Pile Driving SS025211 Flat (Programmable) Mode	
<b>FREQUENCY RANGE</b>	ISEE: 2 - 250 Hz DIN: 1 - 315 Hz SS4604866: 5 - 315 Hz SS025211 5 - 150 Hz or 2 - 150 Hz Flat: 1 - 1 kHz		ISEE: 2 - 250 Hz DIN: 1 - 315 Hz SS4604866: 5 - 315 Hz SS025211 5 - 150 Hz or 2 - 150 Hz Flat: 1 - 1 kHz	
<b>VELOCITY RANGE</b>	Up to 254 mm/s (10 in/s)		Up to 254 mm/s (10 in/s)	
<b>RESOLUTION</b>	0.00788 mm/s (0.00031 in/s)		0.00788 mm/s (0.00031 in/s)	
<b>SENSOR DENSITY</b>	2.2 g/cc (131 lbs/ft <sup>3</sup> )		1.73 g/cc (All Standards) (108 lbs/ft <sup>3</sup> )	
<b>CABLE LENGTH</b>	2 m (6.6 ft)	7 m (23 ft)	30 m (97.4 ft)	75 m (246.1 ft)
<b>EXTENDED CABLE LENGTHS</b>	10 m (32.8 ft) 30 m (98.4 ft) 75 m (246.1 ft)		10 m (32.8 ft) 30 m (98.4 ft) 75 m (246.1 ft)	
<b>MAXIMUM CABLE LENGTH</b>	1,000 m (3,280 ft)		1,000 m (3,280 ft)	
<b>TEMPERATURE RANGE</b>	-40 to 55 °C (-40 to 131 °F)		-40 to 55 °C (-40 to 131 °F)	
<b>REQUIRED SOFTWARE</b>	VISION II		VISION II	



# Micromate Monitoring Unit Sensor Specifications

	MICROMATE MONITORING UNIT									
	ISEE GEOPHONE		DIN GEOPHONE		SWB GEOPHONE		SWP GEOPHONE		BOREHOLE GEOPHONES (COUPLED WITH BASE UNITS)	
PART NUMBER	721A2901	721A2902	721A3301	721A3302	721A3501	721A3502	721A3701	721A3702	721A2401	721A2402
RESPONSE STANDARD	ISEE - 2022		DIN 45669-1 CLASS 1		SS4604866 2011 (SWB)		SS025211 (SWP)		<ul style="list-style-type: none"> <li>• ISEE - 2022</li> <li>• DIN 45669-1 CLASS 1</li> <li>• SS4604866 2011 (SWB)</li> <li>• SS025211 (SWP)</li> </ul>	
FREQUENCY RANGE	2 - 250 Hz		1 - 315 Hz		5 - 300 Hz		2 - 150 Hz		2 - 250 Hz (ISEE - 2022) 1 - 315 Hz (DIN 45669-1 CLASS 1) 5 - 300 Hz (SS4604866 2011, SWB) 2 - 150 Hz (SS025211, SWP)	
VELOCITY RANGE	Up to 254 mm/s (10 in/s)		Up to 254 mm/s (10 in/s)		1 - 250 mm/s (0.039 - 9.84 in/s)		0.1 - 25 mm/s (0.0039 - 0.98 in/s)		Up to 254 mm/s (10 in/s) (All Standards)	
RESOLUTION	0.00788 mm/s (0.00031 in/s)		0.00788 mm/s (0.00031 in/s)		0.00788 mm/s (0.00031 in/s)		0.000788 mm/s (0.000031 in/s)		0.00788 mm/s (All Standards) (0.00031 in/s)	
SENSOR DENSITY	2.1 g/cc (131 lbs/ft <sup>3</sup> )		2.1 g/cc (131 lbs/ft <sup>3</sup> )		2.1 g/cc (131 lbs/ft <sup>3</sup> )		2.1 g/cc (131 lbs/ft <sup>3</sup> )		1.73 g/cc (All Standards) (108 lbs/ft <sup>3</sup> )	
CABLE LENGTH	2 m (6.6 ft)	5 m (16.4 ft)	2 m (6.6 ft)	5 m (16.4 ft)	2 m (6.6 ft)	5 m (16.4 ft)	2 m (6.6 ft)	5 m (16.4 ft)	30 m (98.4 ft) (All Standards)	75 m (246.1 ft) (All Standards)
EXTENDED CABLE LENGTHS	10 m (32.8 ft) 30 m (98.4 ft) 75 m (246.1 ft)		10 m (32.8 ft) 30 m (98.4 ft) 75 m (246.1 ft)		10 m (32.8 ft) 30 m (98.4 ft) 75 m (246.1 ft)		10 m (32.8 ft) 30 m (98.4 ft) 75 m (246.1 ft)		10 m (32.8 ft) 30 m (98.4 ft) 75 m (246.1 ft)	
MAXIMUM CABLE LENGTH	1,000 m (3,280 ft)		1,000 m (3,280 ft)		1,000 m (3,280 ft)		1,000 m (3,280 ft)		1,000 m (3,280 ft) (All Standards)	
TEMPERATURE RANGE	-40 to 50 °C (-40 to 122 °F)		-40 to 50 °C (-40 to 122 °F)		-40 to 50 °C (-40 to 122 °F)		-40 to 50 °C (-40 to 122 °F)		-40 to 50 °C (-40 to 122 °F)	
REQUIRED SOFTWARE	VISION II or THOR Compliance								THOR Compliance (All Standards)	



# Minimate Pro Monitoring Unit Specifications - Standard Sensors

	ISEE GEOPHONE		DIN GEOPHONE		DIN/VDV		BOREHOLE ISEE	BOREHOLE DIN
	720A2001	720A2004	720A2002	720A2005	720A2003	720A2006	720A5601	720A5701
<b>PART NUMBER</b>	720A2001	720A2004	720A2002	720A2005	720A2003	720A2006	720A5601	720A5701
<b>RESPONSE STANDARD</b>	ISEE - 2022		DIN 45669-1 CLASS 1		DIN 45669-1 CLASS 1		ISEE - 2022	DIN 45669-1 CLASS 1
<b>FREQUENCY RANGE</b>	2 - 250 Hz		1 - 315 Hz		1 - 80 Hz		2 - 250 Hz	1 - 315 Hz
<b>VELOCITY RANGE</b>	Up to 254 mm/s (10 in/s)		Up to 254 mm/s (10 in/s)		Up to 254 mm/s (10 in/s)		Up to 254 mm/s (10 in/s)	Up to 254 mm/s (10 in/s)
<b>RESOLUTION</b>	0.00788 mm/s (0.00031 in/s)		0.00788 mm/s (0.00031 in/s)		0.00788 mm/s (0.00031 in/s)		0.00788 mm/s (0.00031 in/s)	0.00788 mm/s (0.00031 in/s)
<b>SENSOR DENSITY</b>	2.3 g/cc (144 lbs/ft <sup>3</sup> )		2.3 g/cc (144 lbs/ft <sup>3</sup> )		2.3 g/cc (144 lbs/ft <sup>3</sup> )		1.73 g/cc (108 lbs/ft <sup>3</sup> )	1.73 g/cc (108 lbs/ft <sup>3</sup> )
<b>CABLE LENGTH</b>	2 m (6.6 ft)	8 m (26.2 ft)	2 m (6.6 ft)	8 m (26.2 ft)	2 m (6.6 ft)	8 m (26.2 ft)	30 m (98.4 ft)	30 m (98.4 ft)
<b>EXTENDED CABLE LENGTH</b>	30 m (98.4 ft) 75 m (246.1 ft)		30 m (98.4 ft) 75 m (246.1 ft)		30 m (98.4 ft) 75 m (246.1 ft)		30 m (98.4 ft) 75 m (246.1 ft)	30 m (98.4 ft) 75 m (246.1 ft)
<b>MAXIMUM CABLE LENGTH</b>	1,000 m (3,280 ft)		1,000 m (3,280 ft)		1,000 m (3,280 ft)		75 m (246.1 ft)	1,000 m (3,280 ft)
<b>SENSITIVITY</b>	0.0126874 V/mm/s (0.32226 V/in/s)		0.0126874 V/mm/s (0.32226 V/in/s)		0.0126874 V/mm/s (0.32226 V/in/s)		0.0126874 V/mm/s (0.32226 V/in/s)	0.0126874 V/mm/s (0.32226 V/in/s)
<b>TEMPERATURE RANGE</b>	-40 to 50°C (-40 to 122°F)		-40 to 50°C (-40 to 122°F)		-40 to 50°C (-40 to 122°F)		-40 to 50°C (-40 to 122°F)	-40 to 50°C (-40 to 122°F)
<b>REQUIRED SOFTWARE</b>	THOR Compliance		THOR Compliance		THOR Compliance/THOR Advanced (VDV)		THOR Compliance	THOR Compliance

Note: All Minimate Pro4/Pro6 Standard Sensors can operate in Advanced mode and benefit from high sample rates (up to 65,536 S/s) when configured with a THOR Advanced license.



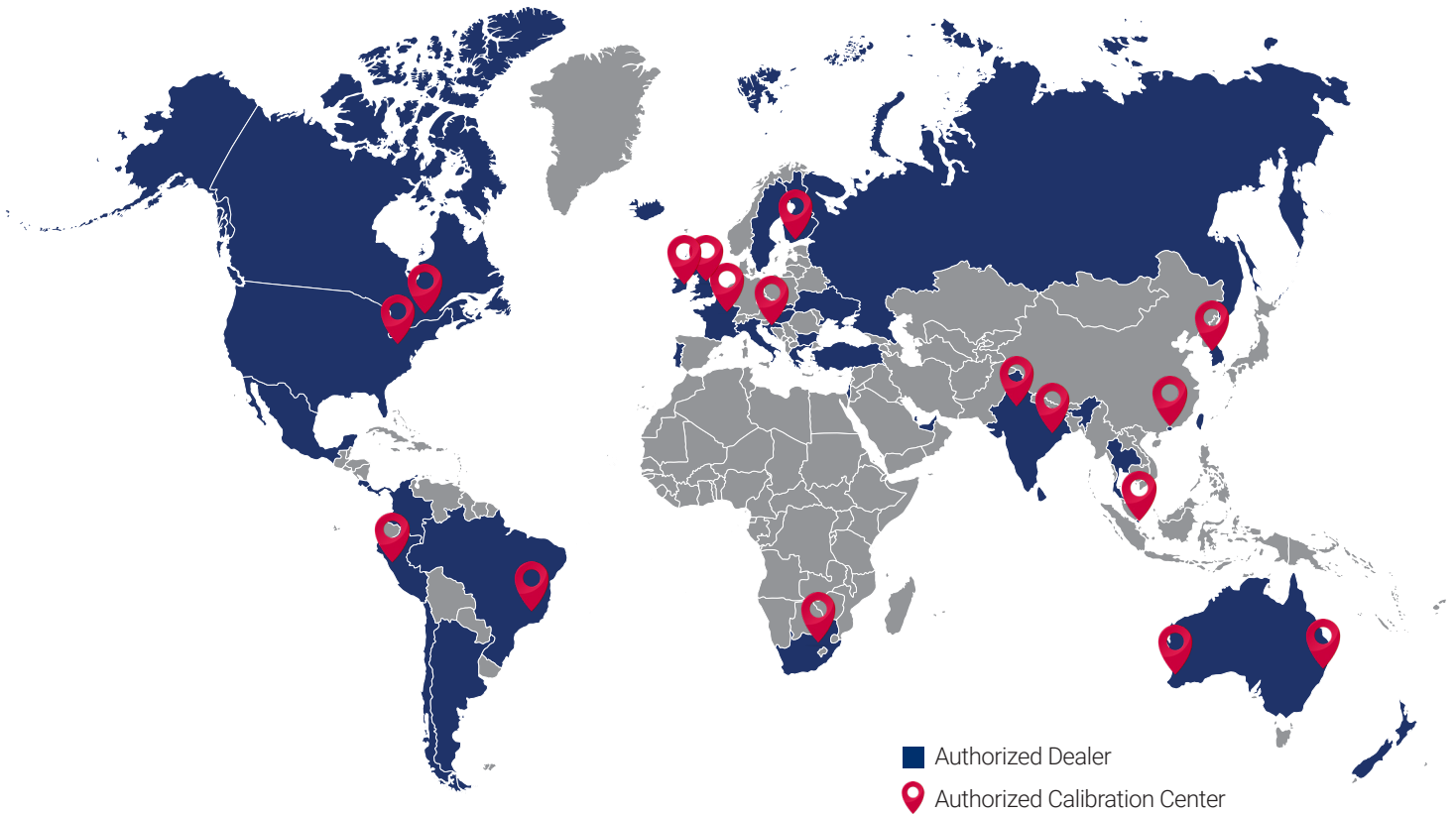
# Minimate Pro Monitoring Unit Specifications - Advanced Sensors

	HIGH FREQUENCY GEOPHONE	HIGH FREQUENCY BOREHOLE	HYDROPHONE	0.5 G ACCELEROMETER	50 G ACCELEROMETER	500 G ACCELEROMETER
<b>PART NUMBER</b>	720A4701	720A5801	720A5001	714A7101	720A6301	720A6401
<b>RESPONSE STANDARD</b>	N/A	N/A	N/A	N/A	N/A	N/A
<b>AMPLITUDE RANGE</b>	2540 mm/s (100 in/s)	2540 mm/s (100 in/s)	324 kPa (47 psi)	0.5 g max < 10 g pk	50 g max +/- 10,000 g pk	500 g max +/- 10,000 g pk
<b>FREQUENCY RANGE</b>	30 - 1,000 Hz	30 - 1,000 Hz	8 - 500 Hz	0.5 Hz - 500 Hz (±3dB)	1 Hz - 3 kHz	1 Hz - 3 kHz
<b>RESOLUTION</b>	0.0788 mm/s (0.00310 in/s)	0.0788 mm/s (0.0031 in/s)	0.0101 kPa (0.00146 psi)	0.0000155 g	0.00155 g	0.0155 g
<b>TRIGGER LEVELS</b>	1.27 - 2540 mm/s (0.05 - 100 in/s)	1.27 - 2540 mm/s (0.05 - 100 in/s)	0.162 - 324 kPa (0.0234 - 47 psi)	0.00032 g	0.032 g	0.256 g
<b>RECOMMENDED SAMPLE RATE</b>	4,096 S/s	4,096 S/s	65,536 S/s	2,048 S/s	16,384 S/s or greater	16,384 S/s or greater
<b>NATURAL FREQUENCY</b>	30 Hz	30 Hz	14.7 Hz	815 Hz	≥ 22 kHz	≥ 38 kHz
<b>SENSOR DENSITY</b>	2.3 g/cc (144 lbs/ft³)	1.73 g/cc (108 lbs/ft³)	N/A	N/A	N/A	N/A
<b>CABLE LENGTH</b>	2 m (6.6 ft)	30 m (98.4 ft)	60 m (196.9 ft)	1.8 m (5.9 ft) Cable (Part No. R6-2-J5A-6)	3 m (9.8 ft) Cable (Part No. 002C10)	3 m (9.8 ft) Cable (Part No. 002C10)
<b>MAXIMUM CABLE LENGTH</b>	1,000 m (3,280 ft)	1000 m (3,280 ft)	Max Operating Depth 46 m (150 ft)	1.8 m (5.9 ft)	3 m (9.8 ft)	3 m (9.8 ft)
<b>MOUNTING THREAD</b>	Connector	Connector	Connector	3/8 - 16 tapped hole	10-32 UNF-2B	10-32 UNF-2B
<b>SENSITIVITY</b>	0.00126874 V/mm/s (0.032226 V/in/s)	0.00126874 V/mm/s (0.032226 V/in/s)	0.0099463 V/kPa (0.068566 V/psi)	6.4451998 V/g	0.064452 V/g	0.0064452 V/g
<b>TEMPERATURE RANGE</b>	N/A	N/A	N/A	N/A	N/A	N/A
<b>REQUIRED SOFTWARE</b>	THOR Advanced	THOR Advanced	THOR Advanced	THOR Advanced	THOR Advanced	THOR Advanced

Note: All Minimate Pro4/Pro6 Standard Sensors can operate in Advanced mode and benefit from high sample rates (up to 65,536 S/s) when configured with a THOR Advanced license.



# Instantel Authorized Dealer Representatives & Calibration Centers



## Dealer Representatives

To find an InstanTEL Authorized Dealer Representative nearest you, please see our Dealer Locator Map at [www.instanTEL.com](http://www.instanTEL.com).

### Americas

- Canada
- USA
- Argentina
- Brazil
- Chile
- Colombia
- Costa Rica
- Mexico
- Peru

### Africa

- South Africa

### Europe

- Bulgaria
- Croatia
- Finland
- France
- Greece
- Hungary
- Iceland
- Ireland
- Italy
- Monaco
- N-Ireland
- Portugal
- Slovakia
- Sweden
- UK

### South Pacific

- Australia
- New Zealand

### Asia

- Bahrain
- Hong Kong
- Israel
- India
- Singapore
- South Korea
- Taiwan
- Thailand
- Turkey
- UAE

## Calibration Centers

To find an InstanTEL Authorized Calibration Center nearest you, please see our Calibration Center Locator Map at [www.instanTEL.com](http://www.instanTEL.com)

### Americas

- Canada
- USA
- Brazil
- Peru

### Asia

- Hong Kong
- India
- Singapore
- South Korea

### Europe

- Croatia
- Finland
- France
- Ireland
- UK

### Africa

- South Africa

### South Pacific

- Australia

Interested in becoming an InstanTEL Authorized Dealer? To learn more please contact: [sales@instanTEL.com](mailto:sales@instanTEL.com)

# Our Services



## Calibration

We recommend that your equipment returns to Instantel annually for calibration. We calibrate at every frequency on the spectrum, not just a subset, so you can be sure it is working in accordance with industry guidelines and specifications. Once completed, a calibration certificate is issued specifying conformity to international standards such as the ISEE and DIN.

[Service@instantel.com](mailto:Service@instantel.com)  
1-800-267-9111



## Service

Whether your unit is sent for repairs, upgrades or calibration, we pride ourselves in our quality workmanship and never take shortcuts. With Instantel, you can guarantee that your event data is accurate. Our Service, Repairs and Calibration team is committed to low turnaround times, keeping units where they are needed – in the field.

[Service@instantel.com](mailto:Service@instantel.com)  
1-800-267-9111



## Support

Instantel is dedicated to providing the highest quality of service through knowledgeable and responsive technical support. Get support by phone, email or Skype. Browse our website's frequently asked questions (FAQs) section or open a ticket to have your unit repaired.

[Support@instantel.com](mailto:Support@instantel.com)  
1-613-592-4642



# Instantel®

## **Company Headquarters**

309 Legget Drive  
Ottawa, Ontario  
Canada, K2K 3A3

## **United States**

808 Commerce Park Drive  
Ogdensburg, New York  
USA, 13669

## **Contact**

Telephone: 1.613.592.4642  
Toll Free (N.A.): 1.800.267.9111  
Email: [sales@instantel.com](mailto:sales@instantel.com)

## **Visit Our Website**

