

# How to Show All COM Ports in Device Manager

## Question:

Why doesn't my Instantel unit communicate with Blastware™ with a COM port value greater than COM20?

## Answer:

Blastware only communicates with ports between COM1 and COM20. Any higher value COM ports do not allow communication, even when assigned. Following the directions below allows you to view all hidden port assignments and either delete these unused ports or re-assign your Instantel units a port in the useable range.

## How to Show and Edit COM Ports in Device Manager:

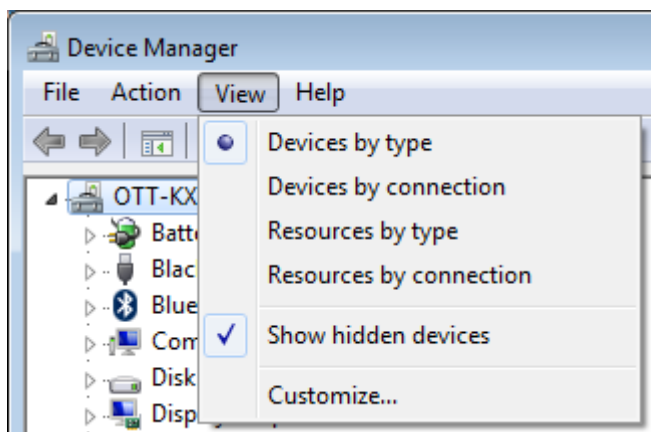
- 1 From the **Start Menu**, open a command prompt and type the following:

```
set devmgr_show_nonpresent_devices=1
start devmgmt.msc
```

**NOTE:** This opens the **Device Manager Window**.

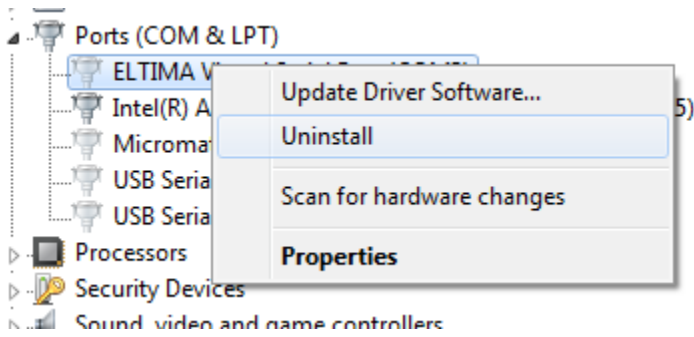
```
c:\>set devmgr_show_nonpresent_devices=1
c:\>start devmgmt.msc
```

- 2 In the **Device Manager Window**, click *View*, then *Show Hidden Devices*.

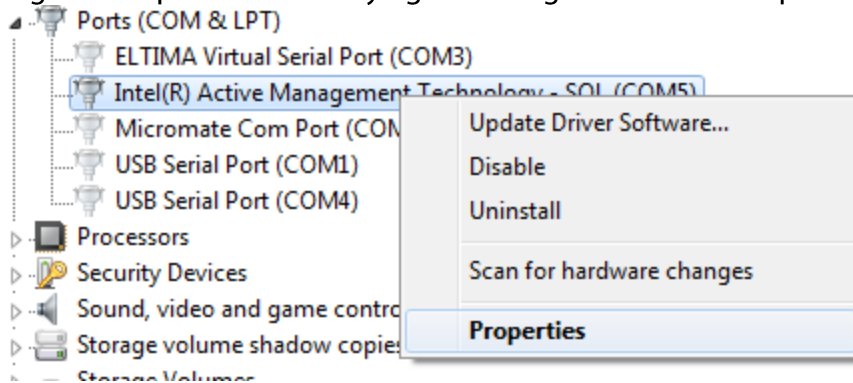


- 3 Expand the Ports (COM & LPT) section to view all COM ports that have been created on your computer. Assigned ports that are not currently in use have a light grey icon.

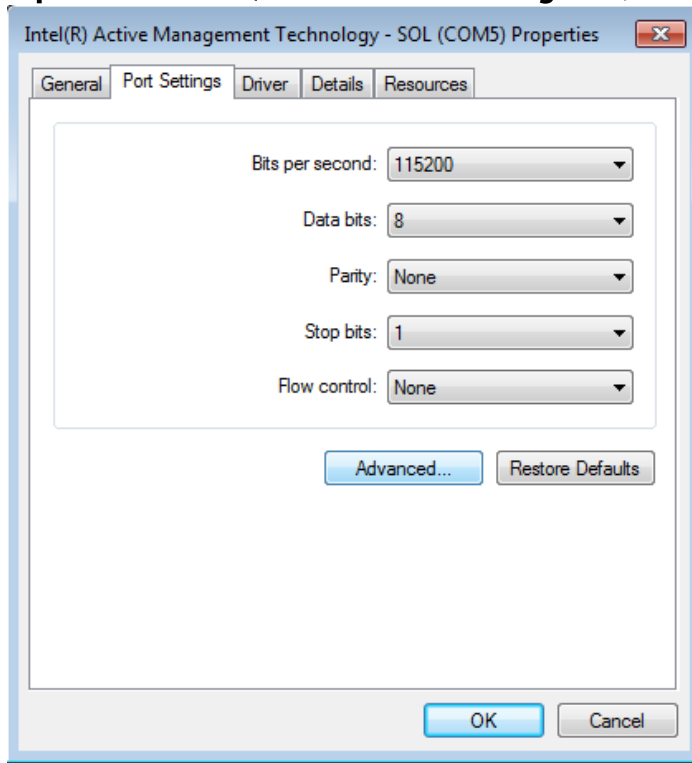
- 4 Remove old COM ports by right clicking on the selected port and clicking *Uninstall*.



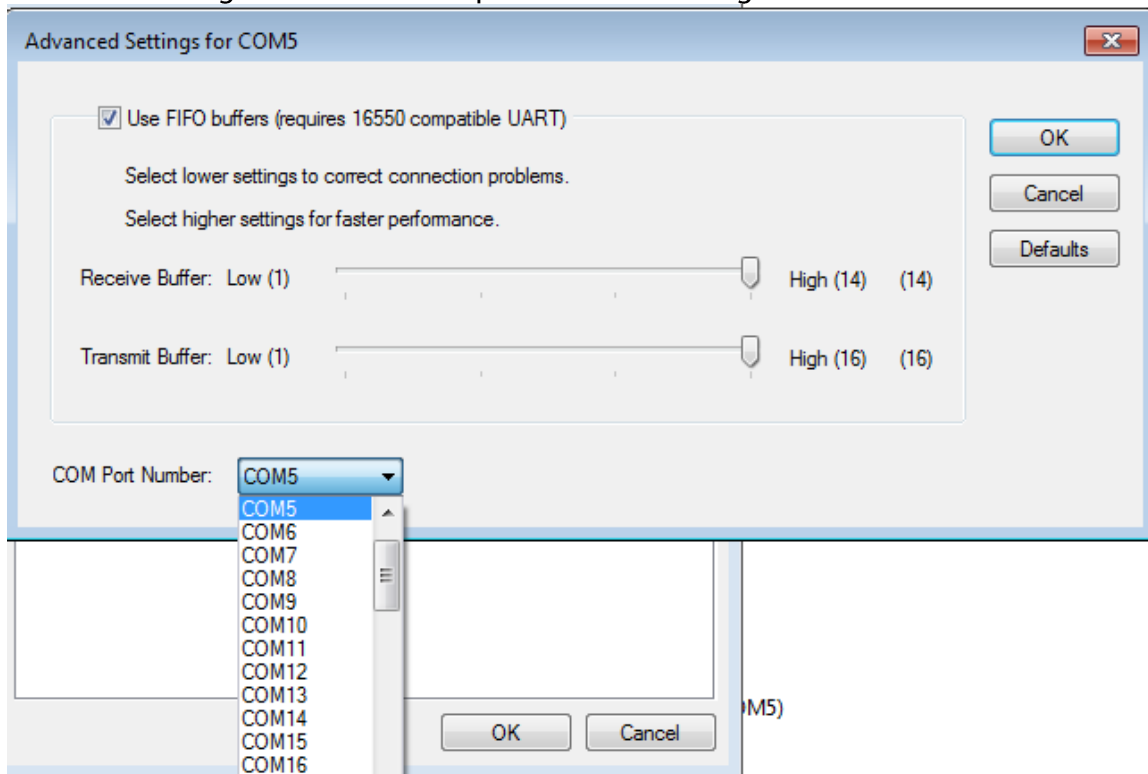
- 5 Reassign active port numbers by right clicking on the selected port and clicking *Properties*.



- 6 In the **Properties** window, click the **Port Settings** tab, then the **Advanced** button.



- 7 To reassign the port number, click the **COM Port Number drop down menu** at the bottom of the dialog box and click the port number to assign.



- 8 After making all your changes, reboot your computer ensure all port assignments have been properly assigned.