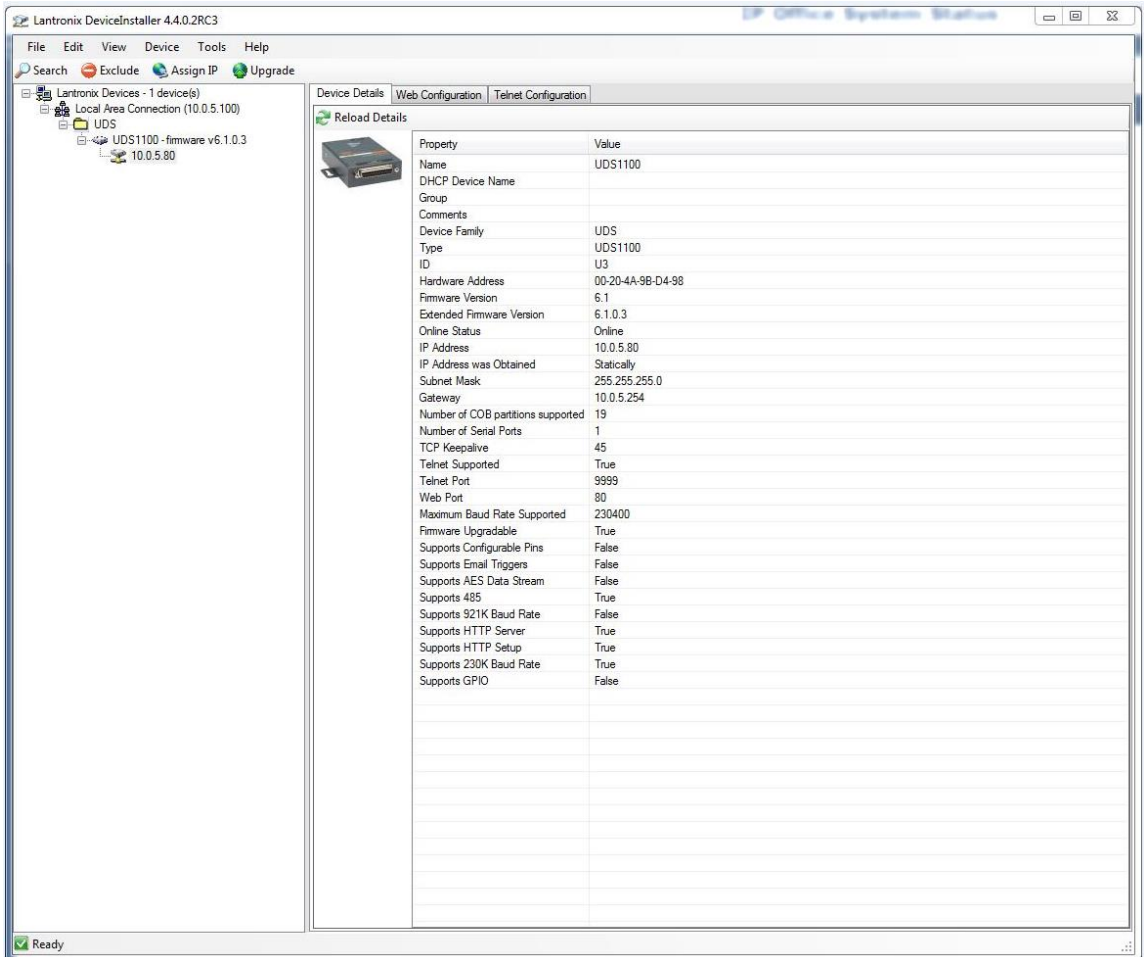


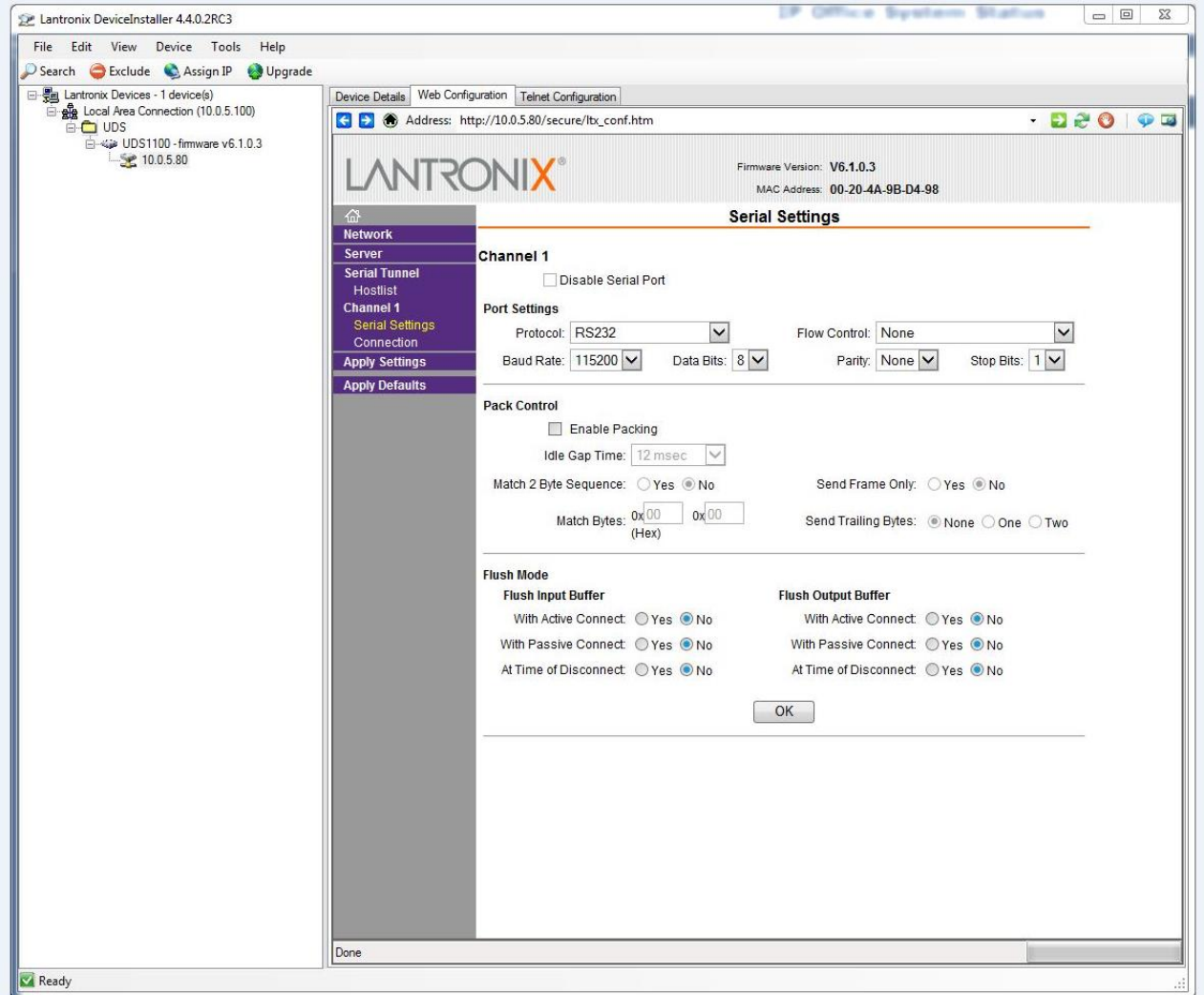
How to Configure the UDS1100 for Micromate communications

1. Download and install the latest version of the UDS “DeviceInstaller” from the Docs & Downloads tab at: <http://www.lantronix.com/support/downloads/?p=UDS1100>
2. Setup an IP address for the UDS (in our case 10.0.5.80)



3. Using the embedded Web Configuration Browser setup the UDS; note, user name and password blank.

- In “serial settings” we configure the “Port settings” and leave the rest as default, then we click “Ok”



- In the “Connection” section we configure the Channel 1 for TCP; Accept Incoming: Yes; Active Connect: Auto Start; Require Password: No

6. Endpoint Configuration, Local Port (This will be the Comms setup for Blastware/THOR) in our case 10001, Remote port (12345) Port for listening in auto call home and then the “Remote Host” is the computer with Blastware in our case 10.0.5.100. We leave the rest as default.

