

Your Data, 24/7/365 - from anywhere

For over 40 years, Instantel has been a global leader with best-in-class vibration, noise and air overpressure equipment for quarries, mining, construction, civil, geotechnical and other applications. Our products have contributed to the success of our customers' projects in over 85 countries and on countless sites. From specialized sensors and recording options, to remote data collection and a cloud-based data hosting solution, Instantel provides solutions that work.

A cloud-based monitoring platform designed with the user in mind

- Get access to your data 24/7/365 from anywhere with an internet connection via laptop, smartphone, tablet or PC.
- Use Live Data™ for real-time monitoring. Take preventative actions to avoid fines and project shutdowns.
- Company management – add and manage as many companies as needed.
- Project management – add and manage as many projects as needed.
- User management – add and manage as many users as needed, create groups for notifications, assign roles.
- Device management – add and manage as many devices as needed, assign, remove, and reassign to projects.
- Enhanced compliance reporting, including building your own custom graphs.
- Snapshot™ views – results are easily identifiable without complex analysis and just one look.
- Scalable – Vision II can easily handle thousands of devices.
- Site Map – visualize your entire project with an interactive map displaying the precise locations of all deployed devices.

Range of Applications

- Construction
- Pile Driving
- Environmental
- Structural
- Underground Mines and Quarries
- Blasting
- Compaction
- Tunnels and Subways
- Bridges
- Oil & Gas
- Demolitions
- Heavy Transportation
- Sound/Noise
- Civil Projects

Vision II Software Includes the Following Compliance Standards and Graphs

- Arrêté de 1994 (explosif)
- Australia 2187-2
- ANSI S2.71 RMS 1s
- AS 2187.2-2006
- Brazilian Standard NBR 9653
- British Standard 6472
- British Standard 7385
- Une 22-381-93 (Criterio Prevencion)
- DIN 4150
- France SNCF, Internal Procedure IN1226
- FTA (VdB)
- ICPE-Cirkulaire 86
- Indian CMRI, DGMS India (A) & (B)
- ISO Standards: 10816-2 RMS, 2631-2 and 8569
- JIS C 1510
- NCh 3577
- NF E90-020:2015
- NOM-026-SESH
- NS 8141 and NS 8141-1
- NS 8175 and 8176
- NZS/ISO 2631-2 Combined curves
- OfM 9/1997
- ÖNORM S9012 and S9020
- PN-B-02170
- SBR-A and SBR-B
- SN640 312a
- Swedish Blasting SS 4604866
- Swedish Pile Driving SS 025211
- Swedish Human Annoyance SS 4604861
- Swedish Air-Shock SS 025210 2
- Swiss SN 640 312a
- Toronto 514-1, 514-2
- Turkey Mining & Quarry
- USBM RI8507 And OSMRE

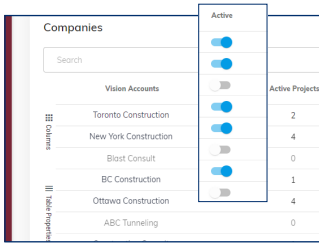


Create your own custom graph for local compliance requirements.

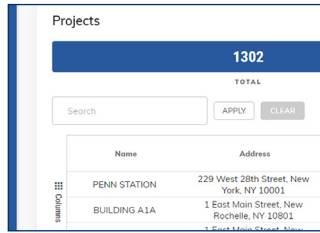
Micromate Plus Monitoring Unit

The Micromate Plus monitoring unit includes the following standard features accessible through Vision // software:

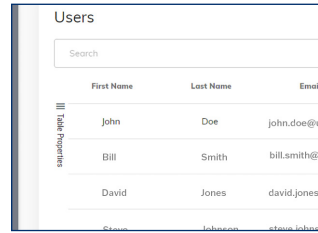
- Company Management
- User Management
- Project Management
- Device Management
- Gauges for Critical Information
- Warnings and Alerts
- Compliance Graphs (downloadable, printable copy based on pre-set industry standards)
- Event Reports



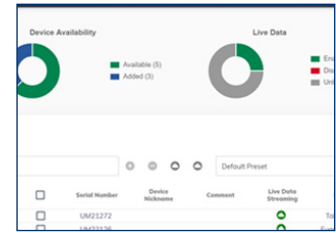
Add as many companies as required. Activate and deactivate companies, view the active projects, and the data storage.



Manage as many projects as required. View the number of devices, users, warnings, and alarms with SnapShot views.



Manage as many users as required. Create user groups for email notifications and assign roles.



View devices and status. Assign, remove, and reassign to projects.

Additional features are available (non-transferable):

Vision // (as outlined in the table: Features Included, Page 3) P/N 72600101 (included with Micromate Plus)

Micromate Monitoring Unit

The Micromate monitoring unit can be used with Vision // (as outlined in the table: Features Included, Page 3). Non-transferable.

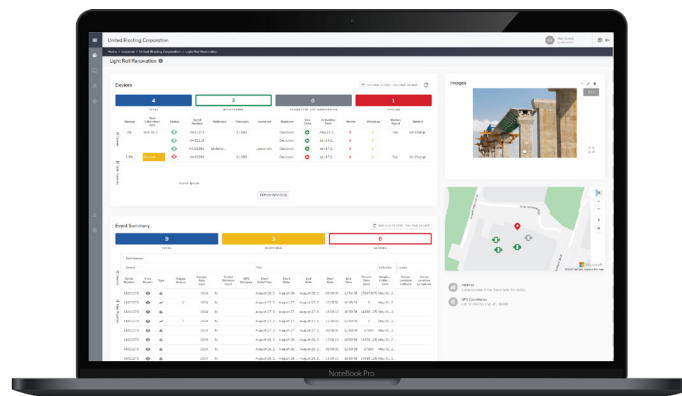
Note: The Micromate monitoring unit requires an external Sierra wireless modem (model numbers RV50, RV50X, and RV55) with Micromate firmware 11.0 or newer and a SIM card with a public static IP address. Per device.

Activation Fee P/N 72600201
 Vision // (for Micromate) P/N 72600101



Vision II Feature List

Feature		Vision II (Per Device) P/N 72600101	Vision II Add-On (Individual)
Storage	5 GB of data storage per device transferable to the rest of your fleet.	●	
Company Management	Add and manage as many companies as required. Add company logos.	●	
Project Management	Add and manage as many projects as required. Add up to 50 images per project.	●	
Device Management	Add as many devices as required; list and search devices; assign/remove them from projects.	●	
User Management	Add and manage as many users as required; assign roles.	●	
Compliance Reports	Export and print a compliance report PDF based on industry standards, such as USBM RI8507 and OSMRE.	●	
Custom Compliance Reports	Custom compliance chart settings (build a graph.)	●	
Gauges for Critical Information	Dashboard view of battery, connection, and storage.	●	
Warnings and Alerts	Set limits for caution and exceedance; receive email warnings and alerts based on these limits	●	
Site Map	Visualize your entire project with an interactive map displaying the precise locations of all deployed devices.	●	
Project Images	Add up to 50 images per project to help keep track of on-site installations.	●	
Sensor Calibration Tracking	Quickly identify which sensors are due for calibration directly from the inventory screen, and use the summary donut at the top for a quick visual overview.	●	
FTP Data Pass-Through	Binary or JSON file data pass-through to a pre-determined IP address via FTP or SFTP (per company.) Pro-rated monthly, minimum one year.		●
Live Data	View events as they are happening, in near real time.		●
Data Overage	Additional 10 GB data storage (per unit) - Annual with automatic renewal		●
Custom Compliance Triggering	Create alerts and warnings on the entire spectrum of the compliance graph.		●



Vision // Feature List (Currently in Development)

Advanced Billing	Run reports for data usage and status for invoicing.		●
Watchdog Alerts	Low battery, geofence exceeded, unit not active, and more.		●
Third-Party Sensors	Add and monitor with third-party sensors.		●
Instantel Advanced Sensors	Add and monitor with advanced Instantel sensors, like a hydrophone.		●
Advanced Analysis	Frequency and signal analysis of data.		●
API Read	Application programming interface for direct queries to Vision // (per company.) Pro-rated monthly, minimum one year.		●
API Read-Write	Application programming interface for direct Vision // queries and control (per company.) Pro-rated monthly, minimum one year.		●
Fleet Management	Management of all devices, regardless of manufacturer.		●
Custom Dashboard	Change and design your dashboard; include widgets.		●
Custom Reports	Design the compliance report layout.		●
Standalone Server	Standalone version of Vision // hosted on an internal server.		●

How Data Storage Works

Each device includes 5 GB of standard data storage, which is added to your shared data storage pool upon registration in Vision II. Overage charges apply for data storage exceedances.

In addition to a real-time dashboard status, the following e-mail alerts will be issued about your storage usage:

75% Usage Alert: A reminder that your fleet has reached 75% of its allocated storage, leaving 25% remaining. To avoid potential overage charges, we recommend deleting unnecessary data.

90% Usage Alert: A reminder that your fleet has reached 90% of your allocated storage, leaving 10% remaining. To avoid potential overage charges, we recommend deleting unnecessary data.

100% Usage Alert: A reminder that you have reached the maximum capacity of your allocated storage. An additional 10 GB of data storage has been automatically added to your account, and additional storage charges now apply.

Sample Data Storage

Device	Storage Amount	Extended	
WUXXXX1	5 GB	5 GB	Your total data storage allocation is 15 GB. This data is shared between all devices in your inventory.
WUXXXX2	5 GB	10 GB	
WUXXXX3	5 GB	15 GB	

Exceeding Data Storage

If your stored data exceeds the allocated amount shared across your device inventory (refer to the Sample Data Storage table), an additional 10 GB of data storage will automatically be added to your account, incurring an overage charge. This additional storage is billed annually on a rolling 12 month basis and will renew automatically unless you reduce your stored data below the allocated limit.

To keep you informed, the following alerts will be issued regarding the auto-renewal:

2 Months Before Renewal: A reminder that your additional data storage will renew in two months. To avoid the renewal charge, we recommend reducing your stored data.

1 Month Before Renewal: A final notice that your additional data storage will renew in one month. Please consider removing excess data to prevent the automatic renewal charge.

Auto-Renewal Date: Your additional data storage has been renewed, and an invoice will be processed for the renewal.

Note: If your data storage exceeds both the base allocation and the additional storage, further overage fees may apply. Data overage fees do not renew on accounts that no longer exceed the base storage allocation.

Sample Data Overage Charges

Devices	Data Storage Pool	Date	Data Storage Used	Data Overage Charge
3	15 GB	Mar [Year]	14 GB	No Charge
3	15 GB	Apr [Year]	18 GB	Annual Overage Charge Applies
3	25 GB	Apr [Year]	12 GB	Annual Overage Charge Does not Renew
3	15 GB	May [Year]	12 GB	No Charge

Terms and Conditions

In Vision II, a “Dealer” refers to an enterprise that purchases directly from InstanTEL, while a “Company” represents your client. The Vision II features do not modify or extend product warranties, nor do they affect calibration or service fees, and they are non-transferable. InstanTEL will not be held liable for any issues with email accounts listed for notifications. Any unpaid charges resulting from overages are subject to the account placed on a credit hold. Terms and pricing are subject to change without notice.

M7107 Rev 2 - Vision II Specifications
© 2020 Xmark Corporation. All Rights Reserved. Design, features, and specifications are subject to change without notice. INSTANTEL, INSTANTEL LOGO, LIVE DATA, MICROMATE, MICROMATE PLUS, SNAPSHOT, and VISION II are trademarks of Xmark Corporation, or an affiliate thereof.