

# Quick Start Guide

## How to Set Up Your Micromate® Monitoring Unit and Sierra Wireless™ Modem on Vision II powered by Instantel

This document describes the simple steps to set up a **Micromate** monitoring unit and **Sierra Wireless** Modem for Vision II.

### Prerequisites:

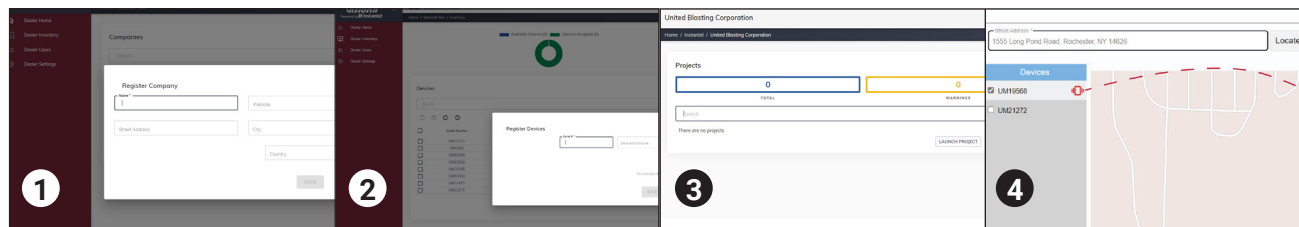
- A Micromate unit with a serial number greater than UM8000.
- A Sierra Wireless modem model numbers RV50, RV50X, or RV55.



### Step 1: Setup on the Vision II website

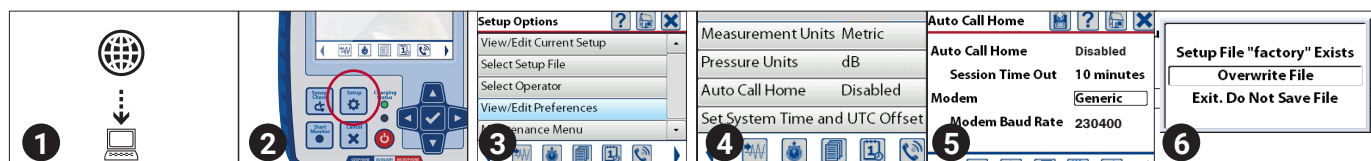
Instantel Vision II (URL: <https://vision2.instantel.com>)

1. Login as a Dealer Admin and register a company.
2. In the Dealer Inventory section register a new device (you must use the device serial number) and assign it to your company.
3. Go to the Company Home page and click on "Launch Project". Follow the wizard's steps and select your device from the list of available devices.
4. Locate your project address on the map. Deploy the device by dragging the icon onto the map.



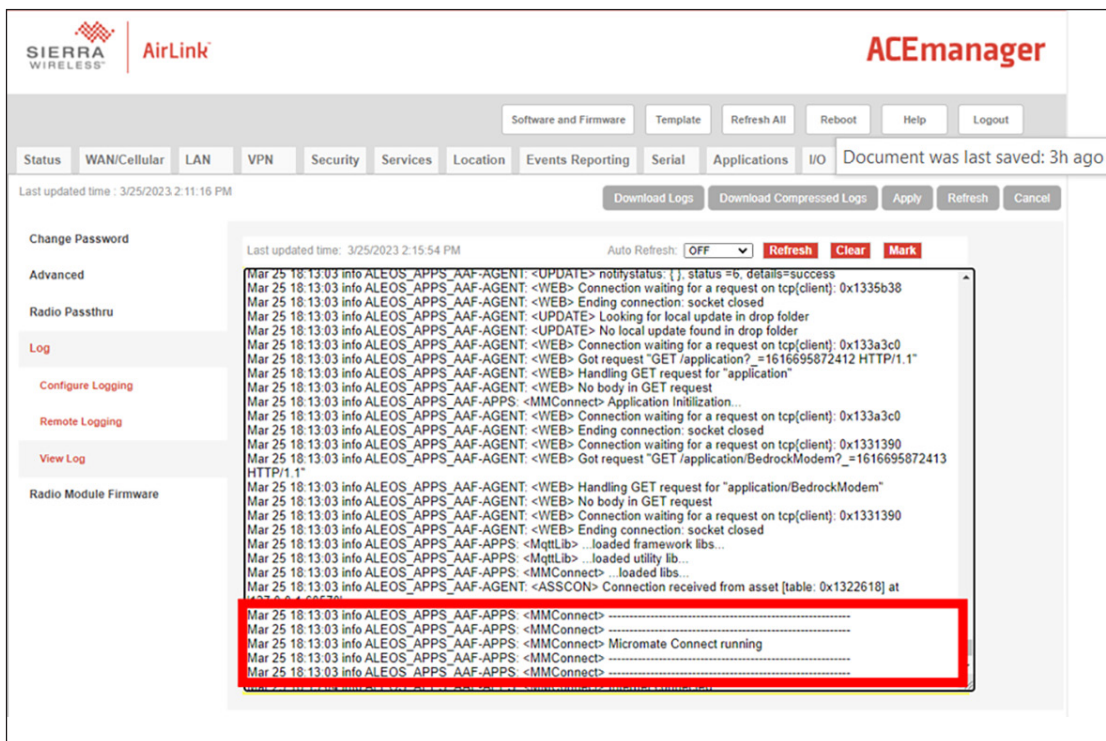
### Step 2: Setup on the Micromate Monitoring Unit

1. Load the firmware version MM 11.0AK made available by [support@instantel.com](mailto:support@instantel.com). You can use THOR or USB drive to upload the firmware. For instructions, review the latest firmware release notes for the Micromate monitoring unit [here](#).
2. Press the Setup button.
3. Tap "View/Edit Preferences".
4. Tap "Auto Call Home".
5. Set the following options:
  - a. Auto Call Home = Disabled
  - b. Modem = Generic
  - c. Modem Baud Rate = 230400
6. Press the "X" button, then save, and overwrite the existing file when prompted.



## Step 3: Setup on the Sierra Wireless Modem

- In a web browser, type the modem's public IP address to access the Sierra Wireless Ace Manager web page. Alternatively, you can use a hardwired Ethernet connection from the modem to your PC (recommended).
  - URL example for remote login : <https://xx.xx.xxx.xx:9443/admin/ACEmanagerX.html#>
  - URL example for hardwire: <https://192.168.13.31:9443>
- Click on Template button and upload the provided ModemTemplate.xml file and reboot.
- If you have security enabled then please whitelist the IP 20.246.29.215 to communicate with Vision II. This can be found under the Security tab (>Inbound (Friends).) Add the IP 20.246.29.215 address there.
- To install the packaged file "BedrockModem-production.tar" containing the Lua script into the modem, follow the steps:
  - Click on the Applications tab
  - Click on ALEOS Application Framework
  - Click expand AAF Applications
  - Choose Lua "BedrockModem-production.tar" file and upload it
  - Make sure the file is running. "Status" should say "Started". If not, click on "Start"
  - Click on the "Admin" tab (2 tabs to the right of Applications)
  - In the Log section (on the left panel), click View Log



## Step 4: Check the Vision II Website

- In Vision II, in your newly created project, click on the serial number to access the Device Dashboard.
- Click on Start Monitoring and then Start Live Data.
- On the Project Dashboard page, the serial number status should turn green (red if not monitoring) and on the device page, the status should be green and indicate active. The Live Data menu will be grey.
- Live Data will begin to stream in Histogram and Histogram-Combo modes. All waveform events are automatically uploaded to Vision II upon completion.

